

Central Minnesota Sustainable Development Partnership



A New Model for Creating Sustainable Communities

Grassroots & Groundwork Conference
June 7, 2012

Presentation Preview



- The Issue
- Who Are We
- What We Did
- Accomplishments ... thus far
- Lessons Learned
- Replication -- Resilient Region Toolkit




Take Home Message



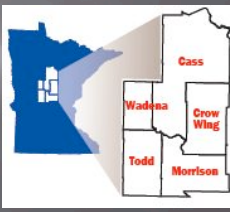
By the end of this session you should discover how building a Resilient Region provides opportunities and can provide a pathway to reduce poverty.



The Issue



Region 5 is the only region in the state of Minnesota where all 5 counties are classified as economically distressed.



Critical Issues

- ❑ Population growth and out-migration.
- ❑ Family farms disappearing.
- ❑ Pressure on natural resources.
- ❑ Economically distressed area.



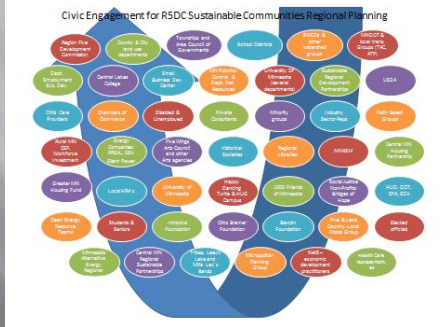
Issue - Regional Sustainability

By definition, sustainable development meets the needs of the present without compromising the ability of future generations to meet their own needs.

Sustainable Development in action will satisfy three guiding principles of: economic prosperity, ecological stewardship and community livability.

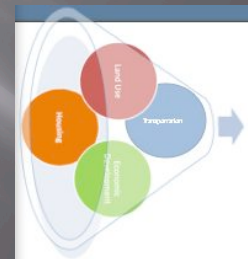


Who Are We




What We Did

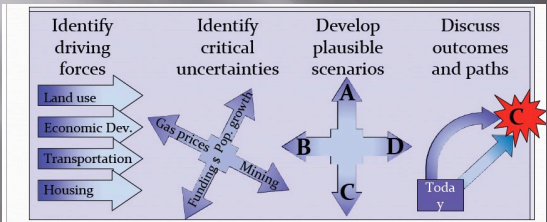
We began to identify the housing, land use, economic development, and transportation needs and issues for our region.



What We Did



We identified potential scenarios. What evolved was: A) abundance, B) bootstrap, C) current trends, and D) doomsday.



The diagram shows a process flow from left to right:

- Identify driving forces:** Includes Land use, Economic Dev., Transportation, and Housing.
- Identify critical uncertainties:** Includes Gas Prices, Pop. Growth, Funding, and Mining.
- Develop plausible scenarios:** Labeled with A, B, C, and D.
- Discuss outcomes and paths:** Labeled with 'Today' and a red starburst 'C'.

Indicators of Success



- Housing Growth Patterns
- Redevelopment - Infill/reuse
- Connectivity
- Energy Conservation
- Water Quality
- Exposure to Environmental Hazards
- Transportation - VMTs
- Diversification of Economic Engines

Indicators of Success



- Access to Food
- Maintain Agricultural Lands & Open Space
- PCPs and NP per 1,000
- Access to Open Space
- Affordable Housing
- Combined Housing and Transportation Costs

Now we are ...



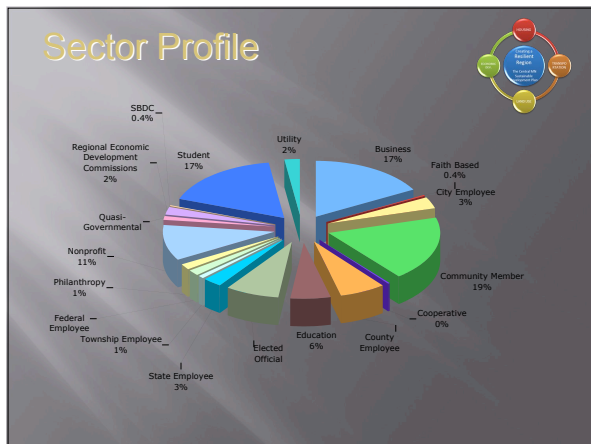
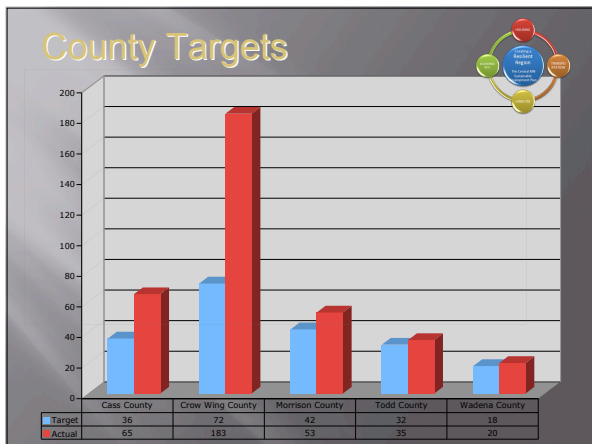
- Refining Recommendations
- Determining Success Indicators
- Identifying Champions

And we will be ...

- Presenting the Final Plan
- Celebrating Our Success so far

Accomplishments ... thus far

- ▣ Housing
- ▣ Transportation
- ▣ Land-use
- ▣ Economic Development

Lessons Learned ...

1. Civic Engagement
2. Maintaining momentum
3. Developing common goals
4. Managing the process
5. Addressing political opposition



Replication -- Resilient Region Toolkit

Use available resources:
www.resilientregion.org

Start the conversations now:
www.incommons.org
www.mpr.org



Summary -- q&a

How does building a Resilient Region have the potential to reduce poverty?
H.U.G. SPARC Home

