

Community Driven, University Assisted

Working together to build sustainable communities in Minnesota

2012 Small Town Symposium
University of Minnesota, Morris

Panelists ~

- **Kathy Draeger**, statewide director, Regional Sustainable Development Partnerships, University of Minnesota
- **Carly Boettcher**, May 2012 graduate, William Mitchell College of Law, Saint Paul
- **Zach Tagar**, graduate student, University of Minnesota, Minneapolis
- Moderated by **Diane Dube**, director, William Mitchell Community Development Clinic

CREATING A RESILIENT REGION

CASS COUNTY
CROW WING COUNTY
MORRISON COUNTY
TODD COUNTY
WADENA COUNTY

Region Five
DEVELOPMENT COMMISSION

U.S. DEPARTMENT OF TRANSPORTATION
UNITED STATES OF AMERICA

U.S. DEPARTMENT OF HOUSING AND URBAN DEVELOPMENT
UNITED STATES OF AMERICA

U.S. ENVIRONMENTAL PROTECTION AGENCY
UNITED STATES OF AMERICA

Regional Sustainable Development Partnerships
UNIVERSITY OF MINNESOTA
Driven to Discover™

Topics & Skills

Think Creatively ~

- **The Who:**
 - High school
 - Undergraduate
 - Graduate & Law students
 - Faculty
 - Centers
- **The What:**
 - Any & all disciplines

The Project ~

- **The Who:**
 - 10 high school students
 - 9 undergraduates
 - 9 law students
 - 7 graduate students
 - 9 faculty
- **The What:**
 - Environmental
 - Science
 - Policy & management,
 - Landscape architecture,
 - Business & Law
 - Applied economics
 - GIS

Diverse Academic Resources ~

What can your institutions do ?

- Fact Finding
- Research
- Analysis
- Drafting
- Technical Assistance
- Faculty expertise & interests
- Student expertise & energy

The Region 5 Project ~

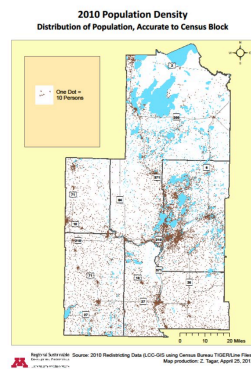
- GIS mapping
- Scenario development
- Facilitation assistance
- Faculty speakers
- Activities – local foods, energy
- Economic analysis
- Fair Housing Equity Analysis modeling
- Policy toolkits
- Performance measures/ indicators

Examples of student work ~

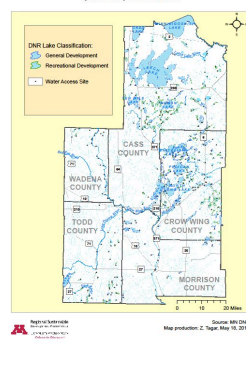
The screenshot shows a web interface for the 'Region Five Sustainable Communities Regional Plan'. It features a list of documents under various categories like 'Conservation', 'Transportation', and 'Land Use'. A circular diagram on the right side of the page illustrates the interconnected nature of different planning areas.

From Base Camp

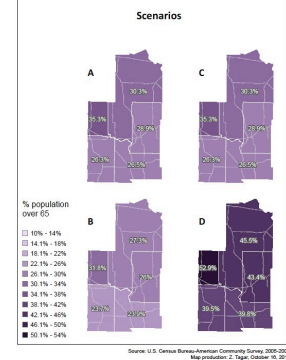
GIS Mapping ~

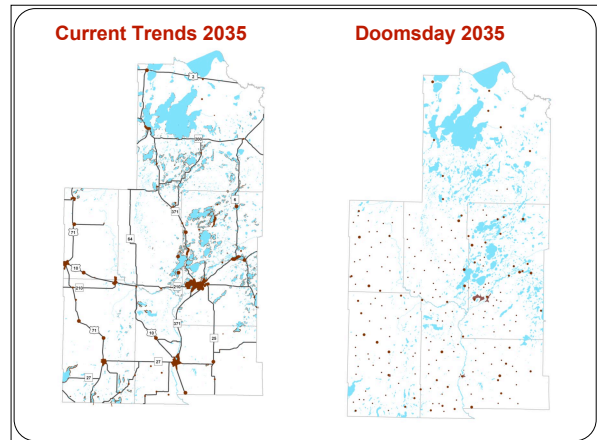
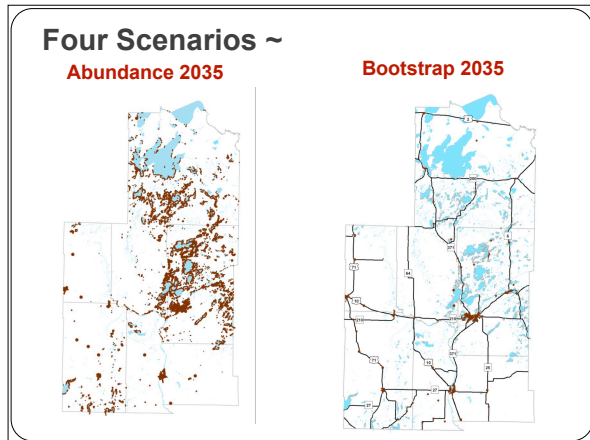


2011 Lakes, Streams and Water Access



Central Minnesota: Aging Population 2035





How to create partnerships ~

- Identify research needs
- Connect
- Engage
- Manage
- Complete
- Celebrate

Regional Sustainable Development Partnerships
UNIVERSITY OF MINNESOTA
Driven to Discover™

Connecting ~

Identify your "target" ~

- Institutional websites
- Faculty bios
- Student organizations
- Centers located at institutions
- Ask around
- Network

Engage your "target" ~

The Region 5 Project ~

- University of Minnesota
 - Internal networks
 - External networks
- William Mitchell College of Law
 - Networking at 2010 Small Town Symposium !
- Initial "targets" brought in their contacts & connections

Working with Students & Faculty ~

Tips & Needs ~

- Communication
- Clarity of
 - Purpose
 - Tasks
 - Timeline
 - End product
- Background information
- Updates
- Guidance
- Encouragement

The Region 5 Project ~

- Retainers & Deliverables
- Communication
 - Base Camp
 - Emails
 - In-person meetings
- Background information through Base Camp
- Clear guidelines & expectations
- Acknowledgement & encouragement

Complete & Celebrate ~

Tips ~

- Deadlines
- Deliverables
- Share the work product
- Acknowledgements
- Presentations
- Letters of Reference

The Region 5 Project ~

- End of semester party
- Base Camp postings
- Thank you
 - One on one
 - Acknowledgement at public gatherings
 - Acknowledgement in reports & articles
 - From multiple sources
 - Frequent & Sincere

Lessons learned ~

- Collaborations between communities & students can be enlightening for both
- Students want relevant experiences
- Sometimes it doesn't work so well
- Each project is different
- Each student is different
- More often than not, it works great!



Questions ?

- **Kathy Draeger**
 - 612-625-3148
 - draeg001@umn.edu
- **Jean Coleman**
 - 612-625-3775
 - colem470@umn.edu
- **Diane Dube**
 - diane.dube@wmitchell.edu
 - 651-290-7510