



Region Five Development Commission
5 Counties. One Vision. One Source



Resilient Region – affordable housing modeling tool



Affordable Housing location-allocation model

Location modeling for affordable housing assists decision makers in determining optimal number of affordable housing units desired by each community.

The result of running this modeling tool is a list with the number of units per municipality for 3 different affordability brackets, based on:

- **Relative need**
- **Employment** opportunities/jobs available
- **Commute**
- **Population**

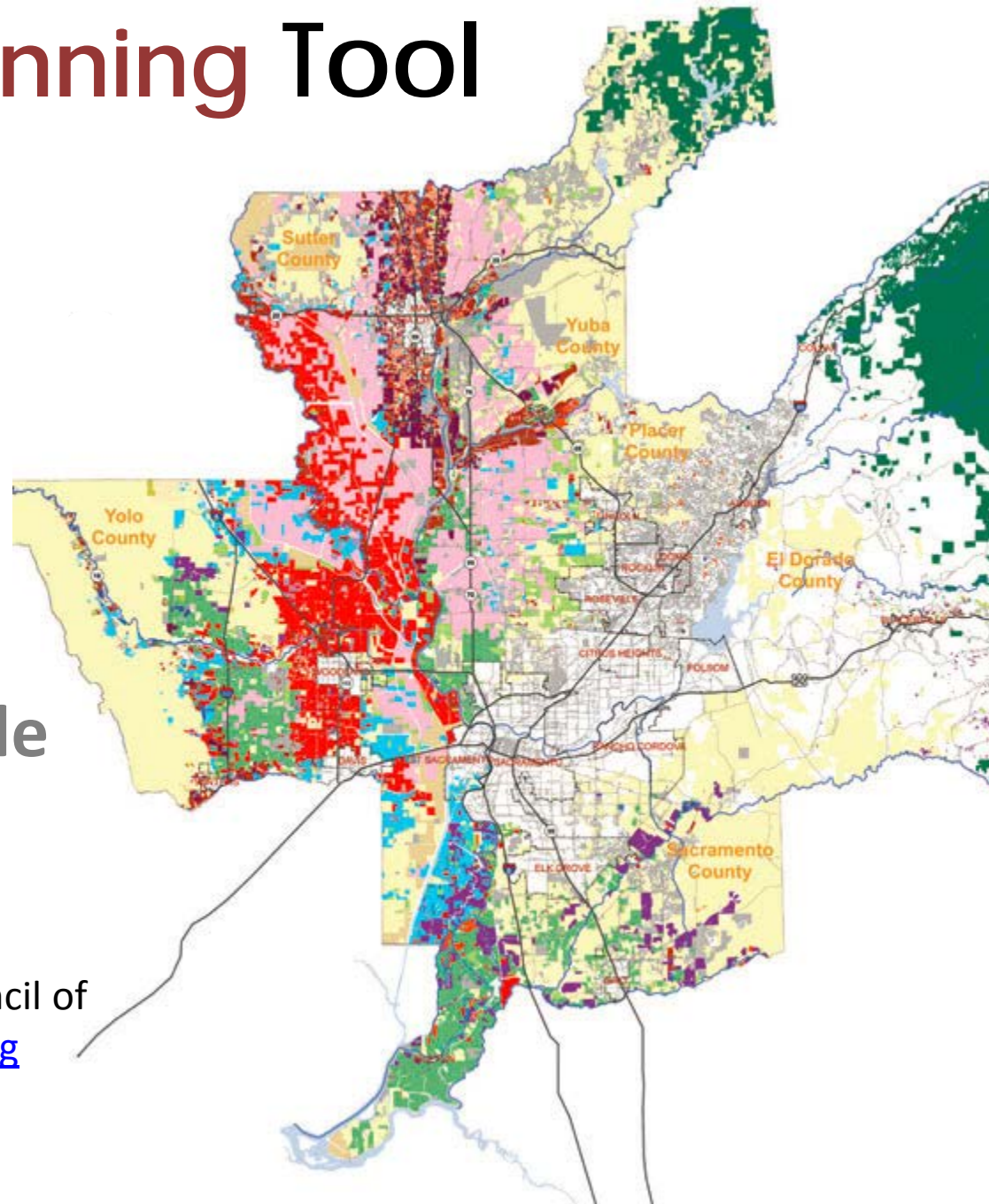
Users must be proficient in ArcGIS to utilize tool.
Contact Zach Tagar at z.tagar@gmail.com
for additional information.



I –Places Planning Tool



**A Multi-faceted
Planning Tool that
Enables planners
to consider multiple
Variables.**



Contact the Sacramento Area Council of Governments at www.sacog.org for additional information

Resilient Region Model Policies and Ordinances



Sample comprehensive plan language & ordinances are sorted by the livability principals and by

- Large cities,
- small cities,
- and counties.



Resilient **Region** Toolkit



The Policy Toolkit provides Communities with best practices in regards to the following areas:

- Economic Development
- **Housing**
- Land Use
- **Natural Resources**
- Transportation
- **General Resources**

Download the both documents at:

www.ResilientRegion.org



Minnesota **GreenStep Cities**

- A voluntary challenge, assistance and recognition program offering Cities a cost-effective, step-by-step path to implement sustainable development best practices.

www.mngreenstep.org



envision Minnesota

● ● ● ● ● www.envisionmn.org

A CONSERVATION DESIGN SCORECARD



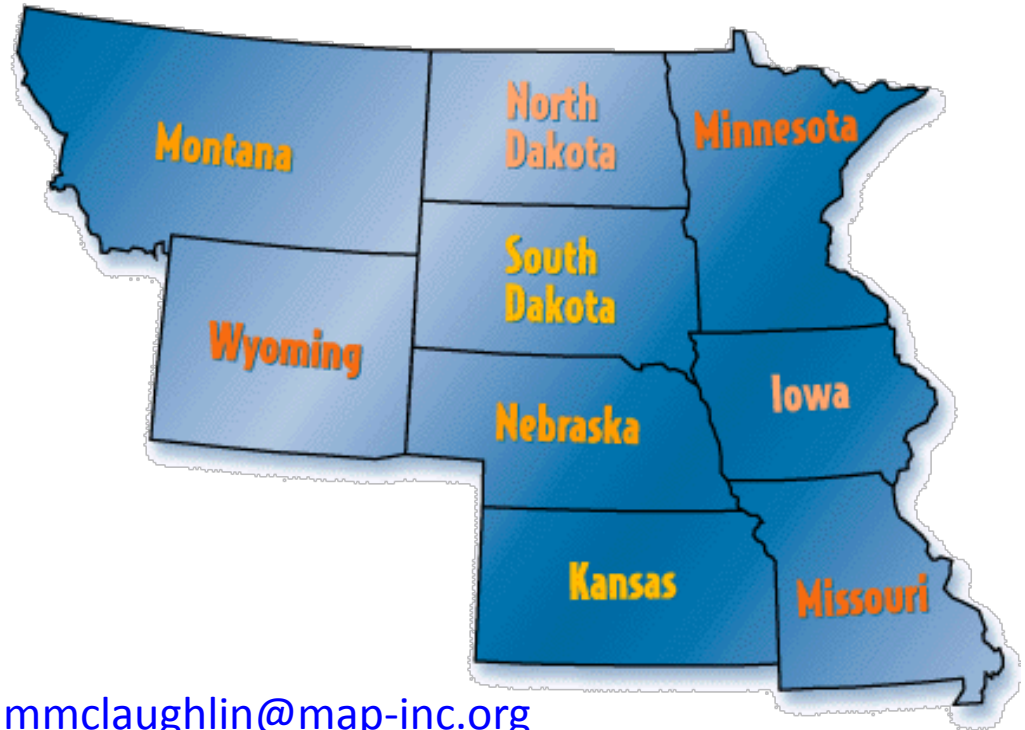
An easy-to-use scorecard to help planners, planning commissions, local officials, developers, and citizens measure to what degree a proposed Conservation Design development achieves the optimal balance of development with conservation.

Contact Phil Hunsicker at
(218) 824-5095 or phunsicker@envisionmn.org
for additional information

Midwest Assistance Program

● ● ● ● ● www.map-inc.org

- Technical assistance and training resource to small communities
- Incorporated in 1979
- Non-Profit 501(c)(3)



Contact Marcie McLaughlin mmclaughlin@map-inc.org
Or Jordan Vandal jvandal@map-inc.org
for additional information

Midwest Assistance Program



What can map do for **YOU** and your utilities?

- Facilities Development
- Management and Finance
- Address Compliance and Environmental Health Issues
- Capacity Development & Building
- Project Planning and Development
- Disaster Management ERP/VA
- Funding applications
- Facilitate meetings
- Financial reporting
- Funder & Primacy Liaison
- Operations and Maintenance TA
- Source Water Protection
- Board Trainings

Triple **Bottom Line** Tool

••••• www.tblltool.org

The TRIPLE BOTTOM LINE TOOL is designed to help optimize the impact of economic development Investment on economic vitality, natural resource stewardship, and community well-being.

THE
TRIPLE BOTTOM LINE
 TOOL

Contact Janet Hammer hammerj@pdx.edu

Or 503-725-5203

for additional information

Jake Heubsch | Transportation Planner

jheubsch@regionfive.org

Tad Erickson | Community & Economic Development Planner

terickson@regionfive.org

www.RegionFive.org

www.ResilientRegion.org

