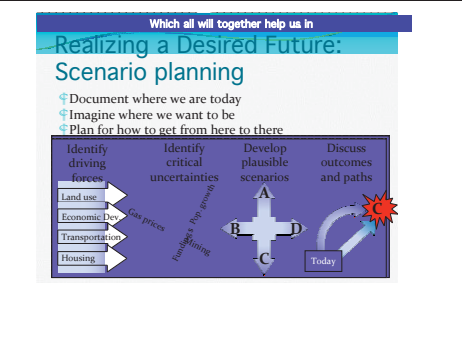
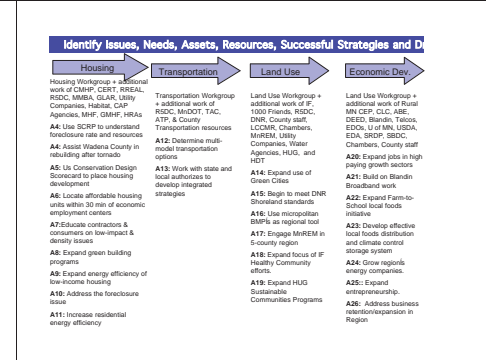
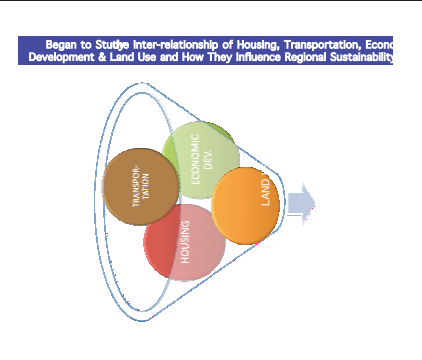
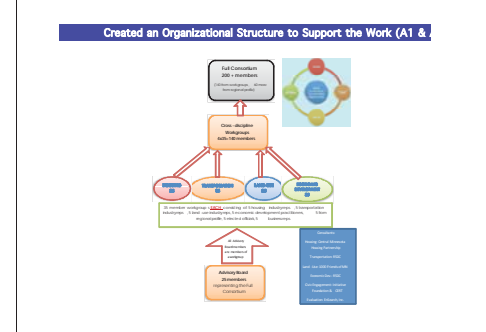
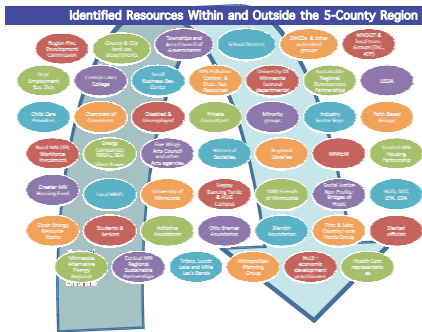


Creating a Resilient Region: The Central Minnesota Sustainable Development Plan -- Project Update



Creating a Resilient Region: The Central Minnesota Sustainable Development Plan -- Project Update

Creating a Resilient Region: The Central Minnesota Sustainable Development Plan -- Project Update

Activity Description	Update as of 7.30.11	Update as of 12.31.2011	Update as of 06.30.2012
Yellow highlight = Grant Application Pending, Grey highlight = application denied, Green highlighted = Application funded.			
<p>Activity 1: Formalize Sustainability Regional Planning Consortium.</p> <p>R5DC, Initiative Foundation, Envision Minnesota, CERTS, CMHP, EnSearch, U of MN</p>	<p>Created a community driven U of MN assisted consortium:</p> <ul style="list-style-type: none"> Established formal agreements Between Region Five Development Commission (R5DC) with HUD, the University of Minnesota (U of MN), Envision Minnesota (formerly known as 1000 Friends), Central Minnesota Housing Partnership (CMHP), Initiative Foundation (IF), Clean Energy Resource Team (CERT) and EnSearch, Inc. Jean Coleman was hired by the U of MN to act as sustainability coordinator. Formal consortium agreements were signed by: Todd County Public Health, Rural Renewable Energy Alliance – (RREAL), Crow Wing County, Central Lakes College, Minnesota Department of Transportation (MNDOT), SEH (private engineering firm), Happy Dancing Turtle, Hunt Utilities Group, USDA Rural Development, MN Department of Employment & Economic Development (DEED), Greater MN Housing Partnership (GMHP), Brainerd Housing Redevelopment Authority, Initiative Foundation, Central MN Clean Energy Resource Team, Central MN Housing Partnership, EnSearch, Inc., 1000 Friends of MN, University of Minnesota Research Centers & Region Five Development Commission. <p>A summary of the work of the advisory committee was inadvertently missing from the July 30, 2011 update. A summary follows:</p>	<p>The community driven U of MN assisted consortium is fully operational.</p> <p>The formalizing part of this activity was done in earlier phases of the project. Since then most of the Foundations activities have been involved in communication with these partners. This includes workgroup meetings that took place in August and September that were well attended. At each of these two work group events there was significant interaction in small groups in order to gather information about what future scenarios should include as well as identifying the linkages between the recommendations of the various work groups. In order to accomplish this numerous planning sessions of key partners were held in order to develop desired outcomes and the processes to achieve them.</p> <p>The third Advisory Committee meeting was held June 14, 2011. There were 11 of the 23 members present (45%). There were 11 guests. The agenda primarily focused on an update on the workgroup meetings and all 26 activities. Discussions included: a. Basecamp: only 60% of membership is logged on. A decision was made to also correspond with the membership via e-mail. b. InCommons: there is a 2 meg. Limit on what can be posted. Dan Frank, as a member of the</p>	<p>The community driven U of MN assisted consortium is fully operational.</p> <p>Core Team Meetings. During of the months of January – June, the core team spent time synthesizing what has been learned from workgroups 1-5, Round 1, Activities 1-26, and all the educational sessions (such as the Resilient Region workshops, Collage of Sustainability). More detail is presented below.</p> <p>The fifth Advisory Committee meeting was held April 10, 2012. The membership was expanded to invite members of the Housing Workgroup. There were 16 of the 30 (53%) members presented and two guests. The agenda included: 1) process update on what is next; 2) resilientregion.org website update, 3) activities work plan update, 4) FHEA presentation, and 5) financial update. Workgroups reviewed the draft FHEA. Two recommendations emerged to be shared with the full consortium as part of the May 8 Round 2 meeting.</p>

Creating a Resilient Region: The Central Minnesota Sustainable Development Plan -- Project Update

Activity Description	Update as of 7.30.11		Update as of 12.31.2011	Update as of 06.30.2012
Yellow highlight = Grant Application Pending, Grey highlight = application denied, Green highlighted = Application funded.				
	<p>The Advisory Committee first met December 2, 2010. Of the 23 members, 15 (65%) members were present. There were 9 guests. The agenda included introductions and welcome, Introduction of the Chair (Bob McLean, CEO, HUNT Utilities Group), review of the governance structure and role of the advisory board, review of project documents, Base Camp/In Commons communication tools, Evaluation and work plan, Next steps. Decisions made were: a. The HUD work plan will be sent to the entire advisory board, b. the advisory committee will be expanded to insure representation of marginalized populations.</p> <p>The second Advisory Committee meeting was held March 8, 2011. There were 19 of the 23 members (83%) present; there were 6 guests. The agenda included: Update on February 23, 2011 Kick-Off event, Scenario Modeling & Policy Workflow, Defining sustainability, Review of 26 activities, Oversight, Financials, and Next steps. Decisions made were to continue work to add a culturally diverse member to the Advisory Board</p>		<p>Stewards Committee for InCommons, will take this issue forward to that group. c. Financials: Nicky Larson was directed to send a notice to all partners who have not yet provided in-kind and leveraged dollars with a specified date due.</p> <p>The fourth Advisory Committee meeting was held November 8, 2011. There were 17 of the 30 members present (57%). The agenda items included: 1) Process – Update on what is next; 2) Washington DC trip update, HUD update; 3) Written work-plan activities update; 4) Input from advisory team regarding education phase; 5) review of projects being submitted from the project planning forms and how all of the work is being leveraged (CEDs connection); 6) Oversight- financials; and 7) review of the Bush Foundation proposal. Decision. Cheryal Hills presented a revised budget and asked for approval. Lynn Hunt moved, Phi Hunsicker seconded, the vote was unanimous – motion carried.</p>	
Activity 2: Overview of Process	Task	Products	Role of the Workgroups/Consortium	
Activity 2: Create a large, paid for, community driven U of MN assisted, in-reach consortium which will involve civic engagement at an	1. Review information about current conditions to understand where the region is at today; Review information	Profile of current conditions: demographic, economic, land use, natural resource, transportation,	March 22 and April 19 2011: Each Workgroup identified what information was needed to describe the current condition of the region in their topic area. Each Workgroup collected identified information about their topic area. U of MN will use the collected baseline information to develop a profile of current conditions.	Completed on Schedule

Creating a Resilient Region: The Central Minnesota Sustainable Development Plan -- Project Update

Activity Description	Update as of 7.30.11		Update as of 12.31.2011		Update as of 06.30.2012
Yellow highlight = Grant Application Pending, Grey highlight = application denied, Green highlighted = Application funded.					
all-time new level for regional planning. R5DC, Initiative Foundation, Envision Minnesota, CERTS, CMHP, EnSearch, U of MN	about trends	and housing Profile of current trends			
	2. Identify and choose plausible future scenarios	Descriptions of up to 4 future scenarios to guide next task		May 24, 2011: Together the Workgroups participated in an exercise to describe plausible futures.	Completed on Schedule
	3. Create up to 4 future scenarios in maps, graphs, images, and narratives	Up to 4 future scenarios		September 20, 2011: Workgroups and the Advisory Committee will receive an update on progress of developing the scenarios. Final scenarios to be completed for the 12/13/2011 Consortium meeting	Completed on Schedule
	4. Choose a preferred future scenario	One preferred scenario		Round 1 -- December 13: The Consortium will review the alternative scenarios and choose one.	Completed on Schedule
	5. Develop policies that will move the region toward the preferred future	A set of policies to guide multiple regional entities to the desired future		Round 2-3-4 Consortium meetings: The Consortium will review the Draft Plan including policies.	Round 2 and 3 completed during this reporting cycle.

Creating a Resilient Region: The Central Minnesota Sustainable Development Plan -- Project Update

Activity Description	Update as of 7.30.11	Update as of 12.31.2011	Update as of 06.30.2012
Yellow highlight = Grant Application Pending, Grey highlight = application denied, Green highlighted = Application funded.			
	<p>In Summary. Steps 1 through 3, gathering and organizing the consortium and the workgroups are accomplished, though ongoing work will continue to be necessary to maintain engagement as we move forward. Step 4, Scenario plans is in process with the University of Minnesota and steps 5 and 6 will take place by the end of 2011. In greater detail:</p> <p>Kick Off Event: The community driven, U of MN assisted, consortium planned for and held a successful kick-off event on February 23 where 185 individuals from the community (business, elected officials, government employees, low-income, students, communities of color, retirement, nonprofit, faith-based, and citizens) learned about and committed to being a part of the project.</p> <p>Regional Profile: Nate Dorr, Regional Analysis MN DEED, synthesized existing statistics (a \$750 in-kind contribution) to create a regional profile: Demographics, Population Projections, Social Characteristics, Poverty, Housing Characteristics, Home Foreclosures, Building Permits, Fair Market Rents, Home Sales Comparisons, Economic Characteristics, Industry Make-up, Monthly Unemployment Rates, and Percentage Change in Projected Labor Force, Agriculture, and Commute Shed. This was shared with all 4 workgroups and posted on Base Camp.</p>	<p>Marginalized Populations: Concentrated serious efforts to engage the marginalized populations.</p> <p>Reaching Out to Leech Lake Band of Ojibwa: Cheryl Lee Hills, R5DC, met with Tribal representatives to explain efforts and issue an invitation to participate. Tribal leadership appointed representatives to participate in the resilient region planning efforts.</p> <p>Reaching out to Students. Angela Headlee, CERT, has continued to work to engage students: 1) spoke to students at the Brainerd High School about the consortium and workshops, 2) engaged the help of a science teacher to promote the consortium and workshops, 3) engaged the help of staff at Happy Dancing Turtle to recruit students. In addition, high school and college students were engaged at the December 15 Round 1 event (see detailed discussion that follows).</p> <p>Resilient Region Workshops. Cheryl Lee Hills, R5DC, and Angela Headlee, CERT Coordinator, organized and presented an update on HUD at 5 Resilient Region Workshops in September. The workshops were held in each of the 5 counties: Crow Wing, Cass, Todd, Wadena and Morrison. The workshops were extensively promoted by the CERT Coordinator through extensively promoted the workshops through emails, flyers, newspaper ads, websites, press releases, list serves, economic development practitioners, chambers of commerce, live radio promotions with 4 local stations, facebook, etc.</p>	<p>Core Team Work: January 2012 "The HUD partners (R5DC, U of MN, Envision MN, CMHP, Initiative Foundation, HUG/HDT, and EnSearch) spent the month of January: a) synthesizing the lessons learned from the December Round 1 of the collaborative meeting voting and b) integrating the work of the work teams and Activities 1-26) into a draft plan to be presented at the May meeting. The team is also working with Minnesota Public Radio (MPR) and Bush Foundation InCommons to identify ways to expand the conversation throughout the region - state - and country via various online tools.</p> <p>Core Team Work: February 2012 The HUD/EPA/DOT partners (R5DC, U of MN, Envision MN, CMHP, Initiative Foundation, HUG/HDT, and EnSearch) spent the month of February continuing to work on a) synthesizing the lessons learned from the December Round 1 of the collaborative meeting voting b) integrating the work of the work teams and Activities 1-26) into a draft plan to be presented at the May meeting. In addition, the team worked on the FEA to add to the analysis already completed by the Housing Workgroup in 2011. A draft FEA has been prepared and the core team is beginning to review it and to identify next steps. The first online discussion, hosted by MPR, was held on February 23 and brought new individuals into the conversation about the HUD/EPA/DOT project.</p>

Creating a Resilient Region: The Central Minnesota Sustainable Development Plan -- Project Update

Activity Description	Update as of 7.30.11	Update as of 12.31.2011	Update as of 06.30.2012
<p align="center">Yellow highlight = Grant Application Pending, Grey highlight = application denied, Green highlighted = Application funded.</p>			
	<p>Workgroup 1: The March 22 Workgroup Meeting, engaged 82 individuals (from all segments of the community) in prioritizing issues in the areas of Housing, Transportation, Economic Development and Land use.</p> <p>Workgroup 2: The April 19 Workgroup Meeting, engaged 80 individuals (from all segments of the community) in prioritizing issues in the areas of Housing, Transportation, Economic Development and Land use.</p> <p>Workgroup 3: The May 23 Workgroup Meeting, engaged 64 individuals (from all segments of the community) in prioritizing issues in the areas of Housing, Transportation, Economic Development and Land use.</p>	<p>A 97 slide PowerPoint was presented at the workshop outlining a very broad basic definition of sustainability and very basic energy efficiency and conservation tips and techniques as well as ways to live sustainable. Cheryl presented an overview of the HUD grant and processes. The workshops also promoted the Conservation Design Score Card, DNR Shoreline Standards, Hunt Utilities Group/Happy Dancing Turtle, Habitat for Humanity and Green Step Cities. Although lower than hoped for, 44 individuals from across the region participated. The participants valued the update of the HUD project (86%) and the information regarding energy efficiency options (93%); 95% indicated that attending the workshop was time well spent. The participants did not rate as high the brief introduction to: The DNR Shoreland Standards (43%), the Conservation Design Score Card (54%), the Green Step Cities program (75%), the Happy Dancing Turtle (HDT) Sustainable Communities Programs (66%), and The Project Planning Form (77%). These lower scores are in part because far less time was devoted to each during the workshop.</p> <p>The CERT coordinator did extensive outreach to engage students in the workshops. There were 13 students in attendance at the Baxter workshop.</p> <p>Workgroup 4: The August 23 workgroup meeting engaged 82 individuals (from all segments of the community) in prioritizing issues in the areas of Housing, Transportation, Economic Development and Land use. Only 27% of those who attended evaluated the day. Of those 95% indicated that the discussion about the four scenario narratives went well, 91% rated the workgroup process as very effective, and 41% reported that the housing speakers helped them learn about housing issues and opportunities.</p>	<p>Core Team Work: March 2012 The HUD/EPA/DOT partners (R5DC, U of MN, Envision MN, CMHP, Initiative Foundation, HUG/HDT, and EnSearch) spent the month of March continuing to work on a) synthesizing the lessons learned from the December Round 1 of the collaborative meeting voting b) integrating the work of the work teams and Activities 1-26) into a draft plan to be presented at the May meeting. In addition, the team has been working on the FHEA to add to the analysis already completed by the Housing Workgroup in 2011. The team is also preparing to expand on the conversations regarding economic engines within the region. There will be an additional event April 30 to help the region explore the economic engines for the future and to identify priorities. The second online discussion, hosted by MPR, was held on April 5th, focused on affordable housing and brought new individuals into the conversation about the HUD/EPA/DOT project.</p> <p>Core Team Work: April 2012 The HUD/EPA/DOT partners (R5DC, U of MN, Envision MN, CMHP, Initiative Foundation, HUG/HDT, and EnSearch) spent the month of March continuing to work on a) synthesizing the lessons learned from the December Round 1 of the collaborative meeting voting b) integrating the work of the work teams and Activities 1-26) into a draft plan which was presented at the Round 2 May, 8th meeting. In addition we hosted a number of visitors from Washington DC.</p>

Creating a Resilient Region: The Central Minnesota Sustainable Development Plan -- Project Update

Activity Description	Update as of 7.30.11	Update as of 12.31.2011	Update as of 06.30.2012
Yellow highlight = Grant Application Pending, Grey highlight = application denied, Green highlighted = Application funded.			
<p>The U of MN Scenario Process is described in report by Jean Coleman as follows:</p> <p>Scenario Planning: Scenario planning is a technique used to make better decisions now in order to reach a desired, plausible future. Alternative futures are described in maps, graphs, images, and narratives. These alternatives are possible futures based on what already exists, trends that we can describe, and on the values and preferences of our community. Scenario planning has been used by communities, businesses, and the military. Our scenario planning will include demographic, economic, land use, natural resource, transportation, and housing aspects. Scenario planning will help us understand and compare the consequences of different choices about the future.</p> <p>Policy Development: The Consortium will choose one preferred scenario (at the Round 1 meeting in December) and develop a plan of action to achieve the desired future described in the scenario. The plan of action will include policies that guide present and future decisions that move toward the desired future. "Policy" in general means a principle or rule to guide the decisions of a group to achieve the desired future. In our project, "policy" will include principles and rules to guide the decisions and</p>	<p>Workgroup 5: The September 20 workgroup meeting engaged 80 individuals (from all segments of the community) in prioritizing issues in the areas of Housing, Transportation, Economic Development and Land use. 94% of the participants evaluated the session. On an effectiveness scale: 89% rated workgroup session #5, 71% rated the entire 5-session workgroup process, 91% rated use of the nominal facilitation process, and 89% rated the description of how the five-session workgroup process fits in with the entire 18 month process as effective (4 or 5 on 5-point scale)</p> <p>Scenario Work: On June 13 and 14, a small group of community members involved in the project reviewed all the material written by Workgroup members and grouped the elements into 4 short scenario narratives. All Consortium members received an invitation to participate in this workshop to create the narratives. Participants included Workgroup Leaders and the project Core Team members. The visions ranged across the possible spectrum of futures. Some were very hopeful and others saw a bleak future. Respecting this range of visions, the 4 short scenario narratives include a future of abundance, a bootstrap future, current trends, and a doomsday future. Each narrative includes brief descriptions of infrastructure, natural, social, political, economic, culture, and technology elements. This information was presented in a brief update to the Advisory Board at their June 14th meeting.</p> <p>The 4 scenarios were presented in draft form at the August 23, 2011, Workgroup meeting. Workgroup members reviewed the draft scenario narratives and were asked if the</p>	<p>FHEA Preparation: Jean Coleman (Sustainability Organizer) and Bill Reinke and Deanna Hemmesch (CMHP), Cheryal Lee Hills (R5DC) and Stacey Stockdill (EnSearch) continued to work on the Fair Housing Equity Assessment. Although the project has been incorporating much of what was required throughout the project, the team spent time digging more deeply into the issue using the framework provided by Dr. Rapael Bostic, the Assistant HUD Secretary for Policy Development and Research at the February 2012 HUD webinar. The draft document was presented to at the fifth Advisory Committee meeting on April 10 and A draft FHEA was prepared and the full advisory committee and housing workgroup members reviewed the data at their April 10 meeting. At that time the team saw the need to focus additional effort, beyond the concern regarding the poor and homeless throughout the region, to include recommendations to address the affordable housing issues for the Native Americans living in Northern Cass County and the Hispanic population in Todd County. The resulting recommendations were then included for review by the full consortium via Base Camp and at Round 2.</p> <p>April 20, Received an award from Greater MN Housing Fund, USDA Rural Development and MN Housing Finance Agency for the Resilient Region work in St. Cloud MN. Aprox 50 in attendance. The housing practitioners also identified next step strategies and those relevant to the five-county region will be incorporated into the final Region Five Resilient Region Plan.</p>	

Creating a Resilient Region: The Central Minnesota Sustainable Development Plan -- Project Update

Activity Description	Update as of 7.30.11	Update as of 12.31.2011	Update as of 06.30.2012
<p align="center">Yellow highlight = Grant Application Pending, Grey highlight = application denied, Green highlighted = Application funded.</p>			
<p>actions of many entities (R5DC, local government, social service agencies, businesses, individuals, schools, etc.) committed to achieving sustainable development in Central Minnesota. Policies may include guidance for local land use ordinances, business strategic plans, purchasing guidelines, investment priorities, etc.</p>		<p>drafts reflected elements of the visions they individually wrote in May and if not, how we could improve the drafts to better reflect their visions. They were also asked if the range of possible futures portrayed in the narratives should go forward and if not how we could improve the narratives. Workgroup members who participated in the May vision writing session overwhelmingly found their voices in the narratives and most members felt the range of narratives should go forward.</p> <p>The 4 scenario narratives were slightly revised based on comments from Workgroup member at the August meeting. The revisions included: highlighting of the same key words in each scenario to quickly compare the differences in economics, government, etc. across the scenarios; and some minor changes in word choice and ideas added or emphasized as suggested by comments.</p> <p>In conjunction with the Key Issues, the 4 narratives guided the development of scenarios to be considered at the Consortium meeting on December 13th.</p> <p>Connecting Key Issues to the scenario narratives: Parallel to the development of the narrative scenarios, the UM collected data for variables related to the Key Issues identified by the Workgroups. These data are being used to portray how each Key Issue will vary from scenario to scenario. For example, broadband coverage is a Key Issue identified by several Workgroups. Information on the number of households served and the cost of serving all households will be illustrated for the current trends scenario. The number of households served and the choice of future investment will change for other scenarios. For example, the doomsday/collapse scenario will have significantly fewer</p>	<p>Economic Engines Workshop: On April 30, 2012 there were 32 individuals from business, nonprofit, public, and philanthropic sectors who worked to identify economic engines as well as emerging industries that are vital to building and sustaining a resilient region. Their ideas were add to the list of recommendations presented to the full consortium via Base Camp (May 2nd) and at Round 1 (May 8).</p> <p>HUD Site Visit, May 7 and 8. . On May 7th and 8th were hosted two visitors from HUD's Office of Sustainable Housing and Communities: our GRT Stephen Cerny, Senior Policy Advisory, and Maria Zimmerman, Deputy Director for Sustainable Communities HUD. The two-day itinerary included a presentation of the Draft Policy Toolkit by the University of Minnesota students, a tour of the regions low-income housing and low-impact housing and businesses developments, a presentation on the mapping project for the FHEA, and attendance at the Round 2 Resilient Region Consortium Meeting. Approximate attendance at various meetings throughout the day: <u>13</u> U of MN Draft Policy Toolkit Presentation <u>11</u> Dinner at Prairie Bay <u>7</u> Regional Tour <u>11</u> U of MN FHEA Mapping Project Presentation <u>115</u> Round 2 Consortium Meeting</p>

Creating a Resilient Region: The Central Minnesota Sustainable Development Plan -- Project Update

Activity Description	Update as of 7.30.11	Update as of 12.31.2011	Update as of 06.30.2012
<p align="center">Yellow highlight = Grant Application Pending, Grey highlight = application denied, Green highlighted = Application funded.</p>			
		<p>households served while the abundance scenario will have near 100% coverage. Information on multiple key issues varying across scenarios will be presented at the December 13th Consortium meeting to enable Consortium members to choose a preferred vision for the future of the region.</p> <p>Preliminary choices about which variables to portray for each Key Issue were made through conversations with experts at the UM, state agencies, and industry associations. These choices were presented to the Workgroup Leaders at two workshops on October 24th and November 21st where they will review preliminary materials and answer the following questions:</p> <ol style="list-style-type: none"> 1. Which variable should be used to best portray the Key Issue and why? 2. How does each variable change over the 4 scenarios? 3. What is the best visual method of portraying the data to convey the message? <p>R5DC Scenario Work Is Cutting Edge: Lesson Learned at HUD Grantee Meeting. We learned at the scenario workshop that what we were attempting to do (scenario planning involving all 4 disciplines of Transportation, Housing, Land Use and Economic Development) has not been done. None of the models presented at the October grantee meeting focused on all four disciplines. The models presented focused on areas such as land use (with four data points). At the scenario workshop Jean Coleman was given some advise on how to proceed – but was told that a model that could be pulled off the shelf for our work was not available.</p> <p>Round 1: At the December 13th meeting there were 160 community members who attended the December 13th meeting. 127 voted on various data points which were used</p>	<p>Round 2, May 8th. There were an estimated 115 who participated in the Round 2 Consortium meeting. The agenda included: a) update on project activities, b) presentation of draft vision, and c) review of draft recommendations. The evaluations are as follows:</p> <p>79% (56 of 71) learned that the HUD/DOT/EPA project: 1) leveraged more than \$2 million for the five-county region; 2) provided for the solar energy project at the Brainerd Airport; 3) resulted in partnering of Brainerd HCP, HRA and Habitat for Humanity to acquire blighted properties within the City of Brainerd; 4) resulted in the five-county fire department shared training project; and/or 5) resulted in the micro-lending project or the five-county area.</p> <p>56% (40 of 71) rated as effective (4 or 5 on the five-point scale) the update on the 26 activities. NOTE: The primary reason for the low rating was because the microphone was not working and half the audience could not hear the presentation.</p> <p>82% (58 of 71) rated as effective (4 or 5 on the five-point scale) the discussion process used during the review of draft recommendations</p> <p>Checked Agree or Strongly Agree: 90% (64 of 71) "The vision presented today represents my view."</p> <p>90% (65 of 71) "I understand how the workgroup and activities were used to develop the draft recommendations."</p> <p>92% (65 of 71) "The recommendations, if implemented, will help the region move forward in carrying out its</p>

Creating a Resilient Region: The Central Minnesota Sustainable Development Plan -- Project Update

Activity Description	Update as of 7.30.11	Update as of 12.31.2011	Update as of 06.30.2012
Yellow highlight = Grant Application Pending, Grey highlight = application denied, Green highlighted = Application funded.			
		<p>to help identify the preferred future:</p> <p>A. Broadband Infrastructure: 49% of 122 voted for Abundance, which means that "The number of households in the region served by broadband service rises from the current level of 40% to 95% served. The community is willing to invest to increase coverage. This will include both public and private investment in service."</p> <p>B. Housing Affordability: 70% of 127 voted for Bootstrap, which means that "The percentage of lower income households spending 30% or more of their income on housing decreases from the current level of 45% to 33%. This decrease occurs because the region is willing to invest in affordable housing and because incomes increase due to better paying local jobs."</p> <p>C. Health Care: 36% of 124 cast votes for Bootstrap, which means that "The number of primary care physicians and nurse practitioners per 1000 people in the region increases slightly from 1.6/1000 (current trend) to 1.8/1000. The number increases because we invest in our local health care services to serve the increasing number of elderly residents and to attract new residents to the region."</p> <p>D. Economic Sector Changes: 58% of 128 voted for Bootstrap, which means "The region focuses on exporting manufactured goods and agricultural products in order to bring dollars into the regional economy. The region also focuses on tourism and arts which bring dollars into the regional economy from outside the region. The health care sector increases to provide a high quality of life. The education sector adapts to training residents for jobs in the region. Government employment decreases."</p> <p>E. Water Quality/Lake Clarity: 46% of 127 voted for Abundance and 42% of 127 voted for Bootstrap, which means, "Abundance/Bootstrap – The current trend is declining lake clarity in most of the lakes in the region. Under Abundance and Bootstrap, clarity improves significantly because the region invests in our lakes. The region needs</p>	<p>vision."</p> <p>98% (70 of 71) "I felt comfortable expressing my opinions."</p> <p>92% (65 of 71) "The outcome from today's work will help us make a difference in the five-county region."</p> <p>Circled 4 or 5 90% "The session today was time well spent."</p> <p>USDA And EPA Site Visit, May 16th. On May 16th, our guests were Colleen Landkamer, Sate Director, Rural Development, US Department of Agriculture and Mathew Dalbey, PhD, Director, Federal & State Division, EPA Office of Sustainable Communities. Their itinerary included presentations on the HUD project and Green-Step Cities; a tour of the region with stops at the Low-income office development site – Fairview Office park, Hunt Utilities Group, Happy Dancing Turtle, RREAL campus. Our guests also made an appearance at the Brownfield Workshop and Ribbon Cutting at the Airport Solar Thermal project.</p> <p>Aprox. Attendance at various meetings throughout this day: <u>39</u> Brownfield workshop <u>20</u> Ribbon Cutting <u>15</u> Resilient Region Lunch update <u>15</u> GreenStep Cities program in Pine River <u>6</u> EPA/USDA dinner meeting</p> <p>May 17 BAELN reviews draft recommendations. There were 16 individuals reviewed the draft recommendations presented at Round 2.</p> <p>Region V Grantee Meetings: Chicago, IL, June 5-7.</p>

Creating a Resilient Region: The Central Minnesota Sustainable Development Plan -- Project Update

Activity Description	Update as of 7.30.11	Update as of 12.31.2011	Update as of 06.30.2012
Yellow highlight = Grant Application Pending, Grey highlight = application denied, Green highlighted = Application funded.			
		<p>good water quality to maintain lakeshore property values and to attract tourism. Some lakes continue to decline because existing development impacts are not addressed although the impact of new lakeshore development is managed."</p> <p>F. Growth Patterns: 51% of 123 voted for Current Trends, which means that "Current trends – modest growth 12,000 new homes. Population increase by 18%, household size is 2.4. People retire here and want to live near amenities so there is moderate lake shore development. There is an increase in affordable housing and jobs so young people return. People live near jobs so big towns and small towns stay the same.</p> <p>G. Transportation: 45% of 128 voted for Bootstrap, which means "There is an emphasis of moving products to market which means a focus on rail and improving/maintaining main roads. Because of tight public budgets, some local roads are not maintained and a few many be abandoned if not used. Transit improves in order to get employees to jobs."</p> <p>HUD Toolkit: R5DC applied to the BUSH Foundation to support additional outreach by the production of a policy toolkit that will include a summary of the processes used and sample templates. The application was approved at \$40,000.00. One feature of the toolkit will include a website "resilientregion.org"; work has begun to identify how elements of the final HUD plan will be featured on this website. In addition, video interviews were produced to highlight the experience of representatives of various stakeholder groups.</p> <p>Integration of 5-Year CEDS and HUD SCR plan. Every five years R5DC is required to develop a 5-year CEDS plan. This year the planning process for CEDS was integrated with the HUD SCR plan activities. This ensures that the ideas generated to date will become an important area for focus for R5DC in the coming years. This makes both the CEDS and</p>	<p>Three team members, Robert McLean, CEO Hunt Utilities Group, Jean Coleman, project Sustainability Coordinator, and Tad Ericson, R5DC Community Economic Development Planner. Attendance was as follows:</p> <p><u>15</u> Rural/Tribal: Community Engagement <u>15</u> University Partnerships <u>15</u> Rural Livability Session</p> <p>White House Presentation: June 13, 2012. Cheryal Lee Hills and Stacey Stockdill were invited to attend Forum on Regional Innovation in Rural America at the White House. There were 53 project and approximately 49 federal employees and partners in attendance.</p> <p>Region Five Resilient Region project seen as national model. Maria Zimmerman, Deputy Director for Sustainable Communities wrote to Cheryal Lee Hills, "The R5 Sustainability Toolkit is a great example of the work that you are doing, and to think about how he feds can help with implementation – both in terms of sharing best practices and learning across communities working on these issues, but also to support implementation across agencies to take this (and some of your other great work like the location modeling for low-income residents to jobs) all to the next level!"</p> <p>Round 3. There were 77 in attendance at the June 12, 2012 Round 3 Consortium meeting. The agenda for this meeting included:</p> <p>A. Update on work from May 8th B. Introduce the Policy Toolkit C. Nominate "Champions" and Resources D. Learn about next steps.</p> <p>60% (40) of 67 estimated consortium members</p>

Creating a Resilient Region: The Central Minnesota Sustainable Development Plan -- Project Update

Activity Description	Update as of 7.30.11	Update as of 12.31.2011	Update as of 06.30.2012
<p align="center">Yellow highlight = Grant Application Pending, Grey highlight = application denied, Green highlighted = Application funded.</p>			
		<p>HUD SCRP efforts sustainable in the long-run versus the short term. Through the CEDS process projects were identified as essential for achieving a sustainable region. Those who submitted successful project ideas have been asked to write white papers. These will be forwarded to potential funding agencies.</p> <p>Identification of the economic engines. The core team believes that the work so far has not yet helped the project identify sustainable economic engines for the future. We are exploring ways to engage consortium members in potentially an online discussion (using MPR and InCommons) to help regional leaders begin the conversation regarding what is on the horizon for the region and then to engage in a more broad public discussion regarding the future vision.</p> <p>HUD Plan to Influence MNDOT. Jake Huebsch and Cheryal Lee Hills from R5DC, were invited to attend a state-wide MNDOT meeting in Brooklyn Park on 12/12/2011 to discuss the MN Go Plan and how to integrate the economic, environmental and quality of place aspects into the statewide transportation plan. The work and learnings from the Transportation Workgroup were presented. After the meeting, R5DC staff was approached by Commissioner Sorell and Surge Phillips (policy person for MNDOT). They wanted to further explore the R5DC recommendations regarding how to maximize transportation dollars by aligning with other disciplines that had shared goals.</p>	<p>completed evaluations</p> <p>On a scale of 1-5; those choosing 4 or 5:</p> <ul style="list-style-type: none"> • 60% rated policy toolkit presentation as effective • 82.5% rates process used to identify champions as effective <p>On scale Strongly Disagree, Disagree, Agree, Strongly Agree, those choosing A or SA:</p> <ul style="list-style-type: none"> • 90% understand why the policy toolkit is an important feature of the work and how it feeds into the future • 87.5% believe good pool of champions and organizations were identified • 90% understand how the workgroup and activities were used to develop draft recommendations • 97.5% believe the recommendations, if implemented, will help the region move forward in carrying out its vision • 87.5% felt comfortable expressing their opinions • 92.5% believe the outcome from today's work will help us make a difference in the five-county region • 77.5% believed it was time well spent. <p>The Round 3 received special recognition by Dave Peters in the MPR Ground Level article. http://minnesota.publicradio.org/collections/special/columns/ground-level/archive/2012/06/looking-for-22-champions-in-central-minnesota.shtml</p>

Creating a Resilient Region: The Central Minnesota Sustainable Development Plan -- Project Update

Activity Description	Update as of 7.30.11	Update as of 12.31.2011	Update as of 06.30.2012
Yellow highlight = Grant Application Pending, Grey highlight = application denied, Green highlighted = Application funded.			
	<p>Target 200: The target of engaging 200 in the consortium has been exceeded. There have been 226 (unduplicated) engaged in at least one of the core activities.</p> <p>Work of the Initiative Foundation and CERT is to involve civic engagement at an all-time new level. We have met our targets, but that does not mean the work is over. Keeping people engaged is a challenge. We have done OK with that. Our work group leaders are trying to keep people engaged at meetings as well as electronically. We are asking for more input into the recommendations over the summer via basecamp and e-mail. We will push really hard to have 70 to 80 engaged at the August 24th Workgroup #4 meeting. Also when we get to December 13th we will need to almost re-recruit people again. So we will continue to work on this.</p> <p>Increased Effort to Engage Marginalized populations:</p> <ul style="list-style-type: none"> R5DC, Long Prairie Chamber, Todd County Economic Development, USDA, and the Latino Economic Development Corporation (LEDC) have been working to engage the Latino/Latina population in Todd County. An initial focus group was held June 6th and 14 Latino/Latina residents attended. Plans were made for a subsequent meeting to engage the broader Latino/Latina community. 	<p>Target 200: An analysis of consortium engagement was prepared for the HUD October Meeting "Rural Engagement". It was learned that at that time the target of engaging 200 in the consortium has been exceeded. There have been 246 (unduplicated) engaged in at least one of the core activities (the Kick Off and/or Workgroup 1, 2, 3, 4 and 5).</p> <ul style="list-style-type: none"> 1% have a known disability 8% are students 16% are low-income and an additional 3% have lost their jobs are employed by companies known to be struggling during this economic downturn. The target of 14% was exceeded. 1% is non-white; however, this reaches 7% when including those reached via special out-reach sessions. The target was 3%. 11% came from Cass County, 49% from Crow Wing County, 8% from Morrison County, 6% from Todd County, and 9% from Wadena County. Targets are exceeded for Crow Wing County (36%), met for Wadena County (9%) and not met for Cass County (18%), Morrison County (21%), and Todd County (16%). Those engaged are cross-sector: 23% Business, 8% student, 21% nonprofit, 6% State Employees, 2% Foundation employees, 1% Federal Employees, 9% Elected Officials, 4% Education Employees, 7% County employees, 1% Cooperative employees, 14% community members, 4% city employees, and nearly 1% from the faith-based community. <p>Since the October presentation, an analysis of all A1-26 activities revealed that nearly 450 individuals (unduplicated count) have been engaged in at least one of the Consortium activities. A sector breakdown is being prepared and was not</p>	<p>Target 200: An analysis of the consortium engagement was prepared for a number of presentations before the Round 2 May 2012 event. It was learned that 484 (unduplicated) individuals have provided input into the regional planning process through the workgroups, round 1, educational sessions, and activities 1-26. The profile is as follows:</p> <ul style="list-style-type: none"> Target 10 students; Actual 86 student Target 27 Low income; Actual 56 Target 6 communities of color; actual 19 Target 36 Cass County; Actual 65 Target 72 Crow Wing County; Actual 183 Target 42 Morrison County; Actual 53 Target 32 Todd County; Actual 35 Target 18 Wadena County; Actual 20 <p>Sector engagement Number = 484:</p> <ul style="list-style-type: none"> County: 13% Cass County, 39% Crow Wing County; 11% Morrison County; 7% Todd County; 4% Wadena County 26% Other counties (typically support received from the University of Minnesota faculty and students and William and Mitchell faculty and students) Sector: 17% Business, .04% Faith Based, 3% City Employee, 19% Community Member, .04% Cooperative, 6.6% County Employee; 6% Education 8% Elected Official, 3% State Employee; 1% Township Employee; 1.9% Federal Employee; 1% Philanthropy; 11% Nonprofit; 1% Quasi-Government; 2% Regional Economic Development Commissions; .4% SBDC, 17% Student, 2% utility.

Creating a Resilient Region: The Central Minnesota Sustainable Development Plan -- Project Update

Activity Description	Update as of 7.30.11	Update as of 12.31.2011	Update as of 06.30.2012
Yellow highlight = Grant Application Pending, Grey highlight = application denied, Green highlighted = Application funded.			
	<p>Information from these meetings is being incorporated into the work of the planning work of the full consortium.</p> <ul style="list-style-type: none"> R5DC and the Initiative Foundation are working together to determine next steps to more directly engaged the Leech Lake and Mille Lac Bands of Ojibwa. Plans are being made to attend the Native American EDC meeting this fall. CMHP has been working with a number of homeless providers to determine how best to address the needs of the homeless in the five-county region. (See Activity 4 for more detail). <p>Key Issues and Recommendations. The four workgroups have: a) identified key issues and b) developed a preliminary list of recommendations that are now under review.</p>	<p>yet available in time for the HUD 12/31/2011 report.</p>	<p>Dan Frank, IF, went to sending individual e-mails to each consortium member to recruit participation for each event. This has been essential and a key factor in our success.</p> <p>Angela Headlee of CERTs has worked tirelessly at student recruitment and continued active engagement. Students are probably the hardest to keep engaged at this time of year as they are preparing for finals, graduation and AP exams. The student engagement has been phenomenal! We have far surpassed our goals and expectations.</p>
<p>Activity 3: Utilize Sustainability Communities Regional Planning Consortium to learn of programs and disseminate information AND to support knowledge sharing across the disciplines. R5DC</p>	<ul style="list-style-type: none"> Conservatively, more than 54 presentations have been made regarding the HUD grant. Information regarding more than 33 educational opportunities regarding various sustainability topics has been shared with the core team, consultants, and/or the full consortium. Shared HUD Preferred Sustainability Status information. The consortium has received two requests to fill out forms for 2 project submittals from our region so far. <p>Receive an award from NADO for Coordinated</p>	<p>Presentations: Since the last reporting date over a dozen presentations have been made, specific to the HUD grant planning and activities. A few are listed below:</p> <ul style="list-style-type: none"> Green Step Cities workshop The meeting with SW Initiative Foundation Friends in the Field DC trip, Oct 2011 Transpiration Conference NADO conference, Oct 2100 Peer to Peer Exchange. Conference of Minnesota Department of Health November 2011. <p>Preferred Sustainability Status Points Awarded to Three</p>	<p>Preferred Sustainability Points Awarded to Central MN Housing Partnership for FOUR separate projects.</p> <p>Presentations by Cheryal since Jan 2012: County Board meetings aprox 10 at each meeting: Todd, 2/7, Cass 2/9, Crow Wing 2/28, Wadena 3/6, Morrison 3/14. All received a Resilient Region update, locations were at county courthouse seat.</p> <p>March 22 update given to North Central Economic Development Association Full Corporation in Staples. aprox 45 in attendance.</p> <p>April 11, Lakewood Health System Board of Directors in Staples MN, aprox 30 in attendance.</p>

Creating a Resilient Region: The Central Minnesota Sustainable Development Plan -- Project Update

Activity Description	Update as of 7.30.11	Update as of 12.31.2011	Update as of 06.30.2012
Yellow highlight = Grant Application Pending, Grey highlight = application denied, Green highlighted = Application funded.			
	<p>Government Services Delivery.</p> <p>Presentations at:</p> <ul style="list-style-type: none"> • Presentation to MN Commissioner of Department of Employment and Economic Development. • Presentation to high-level representatives of MN Department of transportation. • NAHRO – National Association of Housing Redevelopment Organizations – annual conference on May 25, 2011. (Approx. 20 in audience) • MN Housing Finance Agency presentation and housing discussion in April 2011. (Approx. 60 in audience) • Traveled to North Carolina to participate in the National Association of Development Organizations " Sustainable Communities Peer Exchange", (approx. 30 in this group) funded by Federal Highway Administration. <p>Purpose: This peer exchange convened a small group of transportation, economic development and regional planning professionals from around the country to learn about potential models and noteworthy practices for integrating livability</p>	<p>Local Projects. R5DC assisted HRA in Brainerd, HRA in Cass County, and Catholic Charities of the Diocese of St. Cloud in obtaining PSP for their HUD applications.</p> <p>NWAF Requests Presentation Application for HUD Project. A program officer at the Northwest Area Foundation requested that R5DC submit a proposal to speak at the 2012 Grassroots and Groundwork conferences (designed to identify promising strategies to reduce poverty).</p> <p>HUD Project Press Releases. We will begin to send press released to radio stations and newspapers throughout the region on a bi-monthly basis. All releases will be placed into a standardized format which will repeat some of the information over and over. We want to increase awareness that HUD dollars are being used in an efficient and effective way and generating real impact for our region. The tentative list of topics is as follows:</p> <ol style="list-style-type: none"> 1. RREAL – solar thermal installation at Brainerd Regional Airport, \$40,000 grant from USDA/IF & MN Power. 2. CMHP – seeking to develop 70 low-income housing units. 3. Envision Minnesota – Todd County discussion on revisions to shoreland ordinances 4. R5DC – Phase 1 trail underway -- \$50,000 in grants obtained to complete a feasibility study. 5. R5DC- Todd County food processing facilities business plan development; Todd county provided \$5,000 to support this work. 6. CMHP – work to address long-term homelessness 7. Envision Minnesota – Work in the region on storm water management. 8. R5DC – CLC exploring transit options. 9. R5DC – Expansion of the Resilient Region Policy Toolkit -- 	<p>April 12, Todd County Township Association meeting, Browerville MN, aprox 100 in attendance.</p> <p>April 20, Received an award from Greater MN Housing Fund, USDA Rural Development and MN Housing Finance Agency for the Resilient Region work in St. Cloud MN. Aprox 50 in attendance.</p> <p>April 26, Cheryal and Dan Frank presented brief update on regions activities to MN Dept. of Ag, USDA and staff from ALL Federal legislator offices. Aprox 25 in attendance.</p> <p>April 28th Long presentation by Dan Frank, Angela Headlee and Cheryal in Grand Rapids MN to the BUSH Foundation fellows and the Blandin leadership Alumni. Aprox 35 in attendance.</p> <p>Update given to the County Administrators on May 18 in Walker MN, 6 in attendance.</p> <p>May 21 and 22. Presentation to National Association of Community Development Extension Professionals in Park City Utah. 25 in attendance.</p> <p>Presentation by Dr. Stacey Stockdill and Cheryal Hills June 7&8 at the Northwest Area Foundation Grassroots and Groundwork Conference in Prior Lake MN. 30 in attendance at our session. 12 attended the Facilitated Discussion session.</p> <p>Presentation by Jean Coleman and Bob McLean on June 5-7, 2012 in Chicago IL, at HUD's Region V grantee meetings. 45 in attendance at the three sessions (see above for detail).</p>

Creating a Resilient Region: The Central Minnesota Sustainable Development Plan -- Project Update

Activity Description	Update as of 7.30.11	Update as of 12.31.2011	Update as of 06.30.2012
Yellow highlight = Grant Application Pending, Grey highlight = application denied, Green highlighted = Application funded.			
	<p>goals into transportation and economic development plans. The objectives of the peer exchanges was to share resources, identify lessons learned, and highlight key techniques for integrating livability principles into transportation, land use and economic development plans and promoting sustainable regions. The group visited <u>Land-of-Sky Regional Council</u> (Asheville, NC) to learn about their work to integrate land use and transportation planning with environmental initiatives and economic development strategies for the region's diverse rural and urban Appalachian communities. They also visited the <u>Southwestern Commission</u> (Sylva, NC) to learn about the <u>Mountain Landscapes Initiative</u> (MLI), a regional initiative to address land use change and population growth. The MLI led to the creation and implementation of a comprehensive how-to guide for promoting sustainable economic development and protecting regional landscapes and quality of life.</p>	<p>\$40,000 awarded from the Bush Foundation with assistance from Humphrey & William and Mitchell School of Law 10. CMHP – Low income housing tax credit application submitted. 11. Envision Minnesota – La Crescent work could become model for Region Five. 12. R5DC – Fire departments awarded grant from Blandin of \$50,000 to enhance region-wide collaboration to improve efficiency and effectiveness. 13. CMHP – Substandard rental housing to be acquired to provide more affordable housing in the region. 14. R5DC – PCs for People receives \$17,000 from Initiative Foundation and Blandin. 15. Habitat for Humanity – Habitat builds energy star home. 16. Farm on St. Mathias – local school district participating in Farm to School.</p>	<p>Presentation by Jean Coleman on June 13-14 at Symposium of Small Towns in Morris MN. Unfortunately there was only one in attendance.</p> <p>Presentation by Dr. Stacey Stockdill and Cheryal Hills June 13, 2012, Washington, DC, at White House Forum on Regional Innovation in Rural America. There were 53 project and approximately 49 federal employees and partners in attendance.</p> <p>Presentation by Melissa Radermacher: April 18, Morrison County Township Association, Little Falls MN, aprox 75 in attendance.</p> <p>April 30th, Crow Wing County Township Association meeting, Center Township MN, aprox 60 in attendance.</p> <p>The following press releases have been distributed since January: Press Release 1: <i>Work leading to Efficiency at Brainerd Regional Airport</i> Press Release 2: <i>Healthy Lakes Equals a Healthy Economy</i> Press Release 3: <i>Funding Received to Connect State Trails</i> Press Release 4: <i>Todd County Food Processing Facility: Business Plan Developed</i> Press Release 5: <i>Staples Receives Safe Routes for Schools Planning Grant</i></p> <p>May 31, 2012 Smart Growth America Features HUD Staff Visit to Region Five Resilient Region Project.</p> <p>May 30, 2012 University of Minnesota Office for Public Engagement features Region Five Resilient</p>

Creating a Resilient Region: The Central Minnesota Sustainable Development Plan -- Project Update

Activity Description	Update as of 7.30.11	Update as of 12.31.2011	Update as of 06.30.2012
Yellow highlight = Grant Application Pending, Grey highlight = application denied, Green highlighted = Application funded.			
			<p>Region Project.</p> <p>Region Five Resilient Region Project Featured in Journal Article. Johnson, K.A., G. Dana, N. R. Jordan, K. J. Draeger, A. Kapuscinski, L.K. Schmitt Olabisi and P.B. Reich (2012). Using Participatory scenarios to stimulate social learning for collaborative sustainable development. <i>Ecology and Society</i> 17(2):9.</p> <p>Region Five Resilient Region Project featured by HUD. <i>The May 15, 2012 Update from the Office of Sustainable Housing and Communities featured our project in "On the Move in Minnesota."</i></p>
<p>Activity 4: Utilize the Sustainable Communities Regional Planning as a tool to understand the foreclosure rate in the region and to assist Wadena County in rebuilding after the tornado.</p> <p>Central MN Housing Partnership</p>	<ul style="list-style-type: none"> The Minnesota Housing Partnership (MHP) has compiled information regarding the foreclosure rate. It has been shared at the Housing Workgroup meetings and is posted on base camp. The Central MN Continuum of Care (CoC) assembles homeless service providers to coordinate activities and provide input as to the allocation of federal services to serve the homeless. A priority based on HUD directions has been for permanent housing for the homeless as opposed to the more traditional delivery of shelter services. The CoC is growing and recently was awarded federal resources for permanent supportive housing. The issue of supported housing for the homeless raises the issue of which agencies will provide services. The following agencies provide supportive services associated with permanent housing for the homeless: Lutheran Social Services (LSS), Otter 	<p>CMHP Seeking to Develop 70 Units: The Central Minnesota Housing Partnership has identified the development of affordable rental housing as an effective counter to the issue of people losing their homes due to foreclosure. In that regard, CMHP is seeking to develop two rental housing projects of 70 units projects in Region Five whose tenants will include families foreclosed who will be unable to buy another house for years due to credit issues arising from the foreclosure. Further, CMHP, as opposed to various other landlords, will rent this housing to people even with a foreclosure in their credit history (see Activity 6 for project specifics).</p> <p>CMHP Continues to Work Address Needs of Long-Term Homeless: Further, CMHP strives to provide rental housing for Long-Term Homeless in rental projects. This can serve, among others, people who have lost their homes through foreclosure and become homeless. Services for homeless tenants are provided by homeless service providers through interagency agreements.</p> <p>Dissemination: CMHP has promoted these activities and policies as a model for others.</p>	<p>CMHP continued to study homeless in Region Five. On January 25, 2012 CMHP and its partners identified that there were 248 homeless in the five- county region. This number under-estimates the number as the data from some counties was more complete than for others.</p> <p>CMHP brought to the project insights from the Central Minnesota Council on Aging study of the Aging Population of Central Minnesota.</p> <ol style="list-style-type: none"> CMHP is submitting an application for a 34 unit townhome development in Baxter. The project will contain four units for Long Term Homeless families/individuals with a preference for victims of domestic violence. CMHP's selection criteria have been relaxed for potential tenants that have gone through the foreclosure process. Many of the families who have experienced the foreclosure process have other credit issues that will prevent them from purchasing another home

Creating a Resilient Region: The Central Minnesota Sustainable Development Plan -- Project Update

Activity Description	Update as of 7.30.11	Update as of 12.31.2011	Update as of 06.30.2012
Yellow highlight = Grant Application Pending, Grey highlight = application denied, Green highlighted = Application funded.			
	<p>Tail/Wadena Community Action Council (CAC) and Bi-Cap (community action program serving Cass County).</p> <ul style="list-style-type: none"> The city of Wadena is undergoing activities to rebuild areas and buildings damaged or destroyed by the 2010 tornado. The Otter Tail/Wadena Community Action Council works with that effort and has been able to provide updates to the Housing Workgroup as well as providing other needed information. In addition to rebuilding or the physical stock of housing and issue that has arisen and demanded attention is to assist those who have been displaced. MN DEED Foreclosure Data: Activity 4 and 10: The foreclosure rates were synthesized as part of the MN DEED profile for review by all 4 workgroups. R5DC: K-Line Rail improvement Project. Wadena, MN, was written and submitted to Federal Rail Administration to support the extension of the spur to the city's industrial park to accommodate the rebuilding efforts of businesses that were forced to rebuild after the EF-4 tornado (see Activity 26 more greater detail). 	<p>R5DC: Wadena K-Line Rail Improvement Project. The Wadena FRA application was funded at \$1.4 Million</p>	<p>in the near future. The application is requesting approval for \$5,154,000 in equity funds from a syndicator to develop the project. These tax credit equity funds are awarded on a competitive basis through Minnesota Housing.</p> <ol style="list-style-type: none"> CMHP continues to include long term homeless units in all of the new development that we are proposing. People identified as long term homeless may potentially be families or individuals that have gone through the foreclosure process and are not homeless. Foreclosure continues to be a topic of discussion throughout our Home Stretch classes. Lenders and Realtors touch on this topic when they present their information. At the end of class, CMHP provides the participants with additional information and contacts regarding foreclosure. Recently CMHP received \$25,000 in HUD Counseling dollars to continue to work on providing Home Stretch classes throughout central Minnesota. <p>Central MN Continuum of Care (COC) continues to meet and insights from their meetings are brought to the Resilient Regional planning efforts.</p>
<p>Activity 5: Conservation Design Development</p>	<ul style="list-style-type: none"> Conservation design and the scorecard continue to be promoted in the land use work group and conservation design is one of the recommendations to accomplish several of 	<p>La Crescent Work Could Become Model for Region 5. Phil Hunsicker of Envision Minnesota traveled to La Crescent Minnesota on October 5th to meet with developer, Ted Thompson, along with the La Crescent City Planner and the</p>	<p>Progress as of 6/7/2012: Cass County has formed a Technical Review Panel (TRP) for conservation design developments that are proposed in Cass County. The panel is composed of representatives of</p>

Creating a Resilient Region: The Central Minnesota Sustainable Development Plan -- Project Update

Activity Description	Update as of 7.30.11	Update as of 12.31.2011	Update as of 06.30.2012
Yellow highlight = Grant Application Pending, Grey highlight = application denied, Green highlighted = Application funded.			
<p>employed. Envision MN</p>	<p>the land use work group's key issues.</p> <ul style="list-style-type: none"> • So far, Phil Hunsicker of Envision Minnesota has given two presentations on the scorecard during the timeframe of the HUD grant with over 60 individuals in attendance. • Phil Hunsicker is also working with the Center for Urban and Regional Affairs of the University of Minnesota, along with the Minnesota Land Trust to revise the Conservation Design Portfolio, a review of existing conservation design developments in Minnesota. The scorecard will be used to score conservation design developments throughout Minnesota, some of which are located in Region 5. • Finally, as part of the DNR revised shore land standards, conservation design is being promoted as the preferred method of development in shore lands. Crow Wing County now has this in their ordinance. 	<p>chair of the La Crescent Planning Commission. Mr. Thompson would like to create a conservation design development in La Crescent by using the scorecard to balance his development decisions with conservation needs. Even though this development is located well outside of Region Five, it could become an excellent example for the rest of the state on how to develop property in a way that respects the environmental integrity of the development site while still providing a high degree of profitability for the developer.</p>	<p>Cass County Environmental Services, the DNR, the MPCA and other organizations. The panel meets with developers to discuss their design, potential problems, and possible solutions before the application is officially presented to the Cass County Planning Commission.</p> <p>Phil Hunsicker of Envision Minnesota continues to have conversations with the City of LaCrescent about conservation design. The city is located outside of the 5-county region, but it may serve as an example for communities in the 5-county region wishing to promote good conservation design. Phil and his Envision Minnesota colleague, along with representatives from the Minnesota Land Trust (MLT) and University Extension traveled to LaCrescent on March 15, 2012 to meet with the LaCrescent City Council, the Planning Commission and interested citizens. Phil presented the Conservation Design Scorecard. Envision Minnesota promoted a grant program sponsored by the EPA that would provide technical assistance to communities across Minnesota. LaCrescent applied for assistance to promote conservation design and to create ordinances for bluff lands development that is in concert with conservation design principles. Their application was approved and they will receive technical assistance over the summer of 2012. This project should provide good lessons for communities in Region 5 that are interested in promoting conservation design.</p>
<p>Activity 6: Access funding and encourage LUGs to provide incentives to expand affordable housing</p>	<ul style="list-style-type: none"> • A preliminary list of affordable housing rental projects in the 5-county region was developed. This includes HRA, Section 8 and CMHP housing. Connections were also made with every management company within the five-county region to ask for an 	<p>Low-Income Housing Tax Credit Application Submitted. The Central Minnesota Housing Partnership, along with other entities, identified a site, conducted pre-development activities and submitted a Low-Income Housing Tax Credit application for a 34-unit affordable rental housing project in Baxter, Crow Wing County. The City of Baxter provided</p>	<p>Projects Pending and Approved for Affordable Housing, CMHP:</p> <p>\$599,375 in annual tax credits producing \$5,154,100 in equity -- to Minnesota Housing for producing development of 34 units of low income rental housing and</p>

Creating a Resilient Region: The Central Minnesota Sustainable Development Plan -- Project Update

Activity Description	Update as of 7.30.11	Update as of 12.31.2011	Update as of 06.30.2012
Yellow highlight = Grant Application Pending, Grey highlight = application denied, Green highlighted = Application funded.			
<p>developments where they are within a 30-minute commute to economic employment centers.</p> <p>Central MN Housing Partnership</p>	<p>inventory of their rates to determine other sources of affordable housing. The list was shared with the Housing Workgroup members and posted on Base Camp. Efforts are underway to make that list truly comprehensive</p> <ul style="list-style-type: none"> • Employment and employment opportunities are elements of the key issues of the Housing Workgroup • The Housing Workgroup has discussed at length the importance of developing short commute times between home and work. 	<p><i>incentives</i>, including: tax increment financing (TIF), agreeing to fast track the building permit process, agreeing to provide a draft building permit, reducing sewer and water hook-up fees, changing zoning to accommodate the project and giving the project a density bonus to provide a greater number of units of affordable housing on the project site. The project will also provide four units for the Long-Term Homeless, with support services provided by New Pathways, a nonprofit homeless service provider. The project is within a 30-minute commute to an economic employment center, the Baxter/Brainerd area.</p> <p>Work to Acquire Substandard Rental Housing. CMHP has worked with a partner to acquire a substandard 36-unit rental housing project in Brainerd, Crow Wing County, and arranged for its rehabilitation and transition to affordable housing without direct government subsidy. The city of Brainerd was supportive of this activity. The project is within a 30-minute commute to an economic employment center, the Baxter/Brainerd area.</p> <p>Workgroup Priority – Affordable Housing. A priority of the housing workgroup, facilitated by CMHP, as part of the Sustainable Communities process in both its developed recommendations and interdisciplinary cooperation has prioritized the issue of developing affordable housing within 30-minute commutes to employment centers.</p> <p>Unintended Outcome: Beginning Conversations Regarding the Building of a Homeless Shelter in Brainerd. One participant in the HUD project became aware of the needs of the homeless in his county. He approached Cheryl Lee Hills about building a Homeless Shelter in Brainerd. Because of the HUD partnerships he was then connected to Community of Care and CMHP to continue exploration of his idea.</p>	<p>4 homeless units.</p> <p>\$390,000 CMHP pending application to DEED for owner occupied rehab and infrastructure for the city of Riverton.</p> <p>\$635,700 CMHP application to DEED for owner occupied and commercial rehab for the city of Sebeka was awarded.</p> <p>\$491,700 application to DEED for owner occupied and commercial rehab for the cities of Pierz, Little Falls, Royalton was awarded.</p> <p>\$99,000 CMHP pending to Federal Home Loan Bank for owner occupied rehab for Crow Wing, Morrison and Wadena Counties as match for DEED Funds.</p> <ol style="list-style-type: none"> 1. CMHP's previous application for the city of Baxter was not funded last year. This year, CMHP will resubmit the application to Minnesota Housing for funding. The city ranks high in locations because it is one of the top 10 cities identified in greater MN for job growth. The property will also rank well for walk ability as it is on Clearwater Road and is very accessible to highway 371. Additionally, the city has provided the project with Tax Increment Financing allowing the project to rank higher (leveraged TIF estimated valued at \$180,000 – amount not included activity #4). This project is much less than a 30 minute commute to an economic employment center (located in Baxter). 2. CMHP continues to look at acquiring substandard affordable housing. The project in

Creating a Resilient Region: The Central Minnesota Sustainable Development Plan -- Project Update

Activity Description	Update as of 7.30.11	Update as of 12.31.2011	Update as of 06.30.2012
Yellow highlight = Grant Application Pending, Grey highlight = application denied, Green highlighted = Application funded.			
			<p>Brainerd has been acquired and rehabilitation is slowly being accomplished. By the end of this summer rehabilitation work should be done. An additional property was being assessed in walker for preservation. This property recently ended up not being feasibly to receive funding (wouldn't rank high enough through Minnesota Housing's criteria). Both of these projects are located within the city limits.</p> <p>3. The Brainerd HRA along with the County HRA have worked with local units of government and other local partners to address the Brainerd Oaks development that has gone through much scrutiny. Partners are working together to sell affordable homes within this already existing development providing smaller lot sizes.</p>
<p>Activity 7: Educate contractors and consumers on low-impact and density issues. Envision MN</p>	<ul style="list-style-type: none"> Better storm water management is one of the hottest topics in the region and is getting considerable attention in the land use work group. BMPs like storm water management plans, lowering impervious surface area, and promotion of rain gardens and shore land buffers are included in the newly revised Crow Wing County ordinances. To be honest, many of these innovations were fought by realtors and builders, but they were approved anyway. Other progress includes the following: Scott Lucas of the MPCA presented at a Small Site Construction Workshop on April 26, 2011 in Brainerd that was attended by 20 along with 10 vendors. This workshop included presentations on soils, site design and BMPs 	<p>Storm water Management – Envision Minnesota Update: The MPCA continues to lead the statewide effort to promote Minimal Impact Design Standards (MIDS) for better management of storm water. Work Group members include representatives from builders associations, the Met Council, developers, watershed groups, nonprofits, etc. Phil Hunsicker of Envision Minnesota attended a regional meeting in Brainerd on October 6th where a new storm water calculator was introduced. The state storm water manual will be revised/updated by the Spring of 2012 and it will include MIDS and LID BMPs.</p> <p>R5DC Waste Water Update: Because of the work of HUD, R5DC has been approached by the Environmental Protection Agency (EPA) and the Midwest Assistance Program to develop a proposal to assist communities to upgrade their sewer systems.</p>	<p>Unintended Outcome -- Envision Minnesota receives EPA grant. The \$75,000 (year one of a five-year grant) grant is funded through the EPA's Office of Sustainable Communities under their Building Blocks for Sustainable Communities Program. Envision Minnesota is partnering with three other national organizations (Forterra based in Seattle, the Massachusetts Smart Growth Alliance based in Boston, and the Greenbelt Alliance based in San Francisco). This grant will allow Envision Minnesota to offer free technical assistance to communities wishing to move from "idea to action" on projects dealing with 5 main themes: main street vitality, natural resources protection, local food production and promotion, complete streets regulations/incentives, and conservation development regulation/incentives.</p>

Creating a Resilient Region: The Central Minnesota Sustainable Development Plan -- Project Update

Activity Description	Update as of 7.30.11	Update as of 12.31.2011	Update as of 06.30.2012
Yellow highlight = Grant Application Pending, Grey highlight = application denied, Green highlighted = Application funded.			
	<p>for storm water management on small sites.</p> <ul style="list-style-type: none"> • Mr. Lucas is also planning the next Minnesota Erosion Control Association conference, which will be held at Grandview Lodge in Nisswa in March 2012. • The MPCA continues to promote Minimal Impact Design Standards (MIDS), which are based on low impact development (LID) and are the next generation of storm water management. Gary Johanson, Todd County Planner, is an active member with this group and is the key local contact. • University Extension, along with the 30 Lakes Watershed District, is sponsoring a Turfgrass Maintenance Workshop in Brainerd on June 15, 2011. This workshop is designed for property managers, maintenance companies, schools and parks departments. • In Wadena County, citizens and organizations have joined together to create Wadena 2.0, which includes LEED (Leadership in Energy and Environmental Design) certification for the new high school that was destroyed in the tornado, tree plantings throughout the city, and incorporating pedestrian-friendly features and low impact design. 	<p>Unintended Outcome: Envision Minnesota Receives EPA Grant. Envision Minnesota was awarded an EPA's Office of Sustainability Communities grant under their Building Blocks for Sustainable Communities Program. The grant will allow Envision Minnesota to offer free technical assistances to communities wishing to move from "idea to action." Projects could include: 1) main street vitality, 2) natural resource projection, 3) local food production and promotion, 4) complete streets regulation/incentive development, and 4) conservation development regulation/incentive development.</p>	<p>6 communities across the state of Minnesota will receive assistance. In Region 5, one community was selected to participate. Pine River in Cass County will receive technical assistance to promote complete streets by making their downtown more biker- and walker-friendly. Complete streets and other amenities to the downtown area (like more greenery) should entice more bikers, in-line skaters and walkers who are using the nearby Paul Bunyan Trail to get off the trail to explore downtown Pine River's businesses and parks.</p> <p>MAP received EPA dollars to assist Breezy Point and Crooked Lake in upgrading their sewer systems.</p>

Creating a Resilient Region: The Central Minnesota Sustainable Development Plan -- Project Update

Activity Description	Update as of 7.30.11	Update as of 12.31.2011	Update as of 06.30.2012
Yellow highlight = Grant Application Pending, Grey highlight = application denied, Green highlighted = Application funded.			
<p>Activity 8: Expand utility company and Habitat for Humanity green building programs. Clean Energy Resource Team</p>	<p>CMHP Work with Habitat for Humanity: There has been considerable dialogue between CMHP and Habitat for Humanity regarding making their homes more energy efficient and integrating green technologies and efficiencies into the residential development project off Oak Street that went bankrupt. The project has been tied up in court for 2-3 years. The property is owned by Crow Wing County and there is a project involving the city HRA and Habitat for Humanity to determine how to transition it into an affordable housing property.</p> <p>CERT and R5DC Work with Habitat for Humanity: CERT and R5DC met with Habitat for Humanity. Work is underway to convene local Utility Providers, CAP agencies, Habitat for Humanity, HRAs, and CMHP to determine what resources exist to help low-income homeowners make their homes more energy efficient.</p>	<p>Working to Leverage Work in the Region to Increase the Energy Efficiency of Buildings in the Region: CERT coordinator has compiled a contact list of all utilities (19), Habitat for Humanity groups (3), Community Action Programs (3), Housing and Redevelopment Authorities (9), and Central Minnesota Housing Partnership including organization, contact names, email addresses, phone numbers and mail addresses. A comprehensive utility list did not exist prior to working on this activity and the other lists were incorrect and outdated. Our area is unique in that we have 19 utilities servicing 5 counties.</p> <p>All agencies attended the "Resilient Region Energy Meeting" on November 30th, 9:00-12:30. This meeting addressed the following set of questions:</p> <p>What are we currently doing? What are the gaps? What could we be doing? How can we work collaboratively?</p> <p>The CERT coordinator developed and sent out a survey monkey that will address the questions listed above. The results of the survey monkey were used as a basis for the premise of the meeting and will be shared with the attendees at the meeting.</p> <p>In addition, The CERT coordinator has requested that each organization submit a one-page white paper outlining the current energy efficiency programs (and number of participants in each program in the last year) at the Resilient Region Energy Meeting.</p> <p>Unintended Outcome -- H4H Energy Star Home: Kevin Pelkey, CEO Habitat for Humanity, notified CERT that their recent Habitat Home received an Energy Star rating!</p>	<p>The utility meeting was successful in many regards:</p> <p>The Habitat groups, HRAs, CAP Agencies and CMHP all learned that they should be contacting the respective utility when working on projects to see if the utility is able to assist in any way, shape, or form. This alone was incredibly valuable.</p> <p>We had a large turnout. There were 18 attendees. (81.8% of attendees felt that the meeting was 'time well spent' of 4 or 5 rating)</p> <p>The utilities were very well represented. They voiced policy concerns with regards to CIP credit for BTUs vs. KWHs.</p> <p>Recommendations and Actions from the Utility meeting were added to the Energy Themes.</p> <p>A recommendation was made to create a Regional utilities map. This will be included on the new Resilient Region website, along with links to all utilities and their rebates and incentives programs.</p> <p>It was also recommended that regular meetings be scheduled to continue to address issues and concerns.</p> <p>Angela, CERTs coordinator, has reached out to the Region Five utilities to offer her assistance in whatever fashion she can best serve the utility companies, i.e. promotion of rebates/incentive, education, outreach, etc.</p> <p>The utility meeting minutes were recorded and documented by Stacey Stockdill. White papers from each of the utilities were requested to document projects, loans, programs, and energy savings. Few submitted.</p>

Creating a Resilient Region: The Central Minnesota Sustainable Development Plan -- Project Update

Activity Description	Update as of 7.30.11	Update as of 12.31.2011	Update as of 06.30.2012
<p align="center">Yellow highlight = Grant Application Pending, Grey highlight = application denied, Green highlighted = Application funded.</p>			
			<p>The utility companies, HRAs, Habitats, CMHP, and the CAP agencies have all been continually invited to participate in the HUD Regional Sustainable Communities Planning Grant Consortium.</p> <p>Update from Crow Wing County: The CWC HRA, in partnership with CWC and Habitat for Humanity, is working on the redevelopment of the Brainerd Oaks subdivision. This was a subdivision of the Brainerd City HRA and the City of Brainerd that went belly-up, primarily due to the timing of when it went on-line. It went into tax forfeiture awhile ago and the CWC HRA has acquired what used to be the sales office at the entrance of the subdivision and is currently working with Habitat for Humanity to get that rehabbed and into the hands of a Habitat family. Should this be successful, which we are confident it will be, CWC has indicated its willingness to turn over the rest of the tax forfeited parcels in this 90-lot subdivision to build new Habitat homes on for low income folks. In so doing, the city's special assessments for sewer and water infrastructure will get repaid sooner.</p>
<p>Activity 9: Expand energy efficiency of low-income housing. Central MN Housing Partnership</p>	<ul style="list-style-type: none"> In the recommendation and general basis of the Housing Workgroup the issues of energy efficiency along with green technology has been universal, being a large part of all five key issues. We see that since there are recommendations to create or rehabilitate affordable housing for all demographic groupings, this is an appropriate time to educate all involved, professional and non-professional alike, about the advantages and 	<p>Workgroup Recommendation to Expand Training. The housing workgroup, facilitated by CMHP and the Sustainable Communities as a whole have embraced through outreach and recommendations developed to enable training of contractors in aspects and techniques of energy-efficiency (including green technology) in housing construction. This concept can lead to a greater acceptance of energy efficient technology in future affordable housing construction.</p> <p>Housing Projects Seek Energy Efficiency (see Activity 6): The housing projects listed by CMHP above in Activity 6 seek energy efficiency in new construction and rehabilitation</p>	<ol style="list-style-type: none"> Central Minnesota Housing Partnership participated in the educational trainings provided through the grant allowing energy companies to educate us on the resources they have available. CMHP would like to incorporate more of those efficiencies within our new multifamily projects and our rehabilitation projects. CMHP is currently including the Minnesota Green Standards overlay as part of all new and rehabilitation projects that CMHP proposes (included in the new Baxter project). CMHP continues to work with the Small Cities Development Program (SCDP) through the

Creating a Resilient Region: The Central Minnesota Sustainable Development Plan -- Project Update

Activity Description	Update as of 7.30.11	Update as of 12.31.2011	Update as of 06.30.2012
Yellow highlight = Grant Application Pending, Grey highlight = application denied, Green highlighted = Application funded.			
	<p>development characteristics of energy efficiency. This can be readily seen in affordable rental projects that the Central MN housing Partnership has developed, specifically two projects in Baxter: Grand Oaks Town Homes and Grand Oaks Court Town homes. These projects utilize energy efficient concepts and technology and conform to the Minnesota Green Criteria Overlay, which the state has adopted.</p> <ul style="list-style-type: none"> Application submitted and funded by USDA to place solar thermal on municipal structure demonstration sites throughout the region, with workshops scheduled one year later to promote ROI. In process of submitting an EDA i6 grant to expand the solar cluster (see Activity 24 for detail). 	<p>through design and construction. The project in Baxter would be built following the guidelines of the Minnesota Green Technology Overlay, which details energy efficiency. The project in Brainerd is seeking to rehabilitate with provisions for saving and efficiencies in energy usage.</p>	<p>Department of Employment and Economic Development (DEED). CMHP works with low income homeowners to make improvements on their single family homes. These improvements always include energy efficient improvements. Currently, CMHP has an application in for single family and commercial rehabilitation for the cities of Pierz, Little Falls and Royalton in the amount of \$491,700. The city of Sebeka is requesting \$635,700 for single family and commercial rehabilitation. The city of Riverton is requesting \$390,000 for single family rehabilitation and to improve their current water and sewer infrastructure. CMHP has also requested \$99,000 as match funds for the owner occupied rehabilitation improvements from the Federal Home Loan Bank.</p>
<p>Activity 10: Address the foreclosure crisis through consumer education. Central MN Housing Partnership</p>	<ul style="list-style-type: none"> CMHP, Lutheran Social Services (LSS), Otter Tail/Wadena Community Action Council (CAC) and Bi-Cap (community action program serving Cass County) are involved in educational activities that seek to provide consumers with the necessary knowledge, regarding financial and other subjects, to avoid foreclosure. The Home Stretch homebuyer education curriculum and program that the Central Minnesota Housing Partnership teaches is an added tool against foreclosure since the foreclosure and delinquency rates among graduates is a great deal lower than among homebuyers. 	<p>Home Stretch Graduates Have Lower Foreclosure Rate. CMHP in conjunction with a network of volunteer instructors continues holding Home Stretch homebuyer education classes serving people in Region Five. Of significance is the material in Chapter 7 of the Home Stretch presentations and training material, which deals with foreclosure issues including foreclosure prevention. Home Stretch graduates have a lower foreclosure rate than homebuyers who have not taken the class.</p> <p>Foreclosure Issue Identified as Key Area of Concern to be Addressed in the Regional Plan. In the process of facilitating and coordinating the housing workgroup of the Region Five Sustainable Communities program, CMHP has discussed aspects of the foreclosure crisis, and the members of the workgroups have identified the foreclosure issue as a matter of concern in developing recommendations. This has educated members of other workgroups and will educate the</p>	<p>Foreclosure continues to be a topic of discussion throughout our Home Stretch classes. Lenders and Realtors touch on this topic when they present their information. At the end of class, CMHP provides the participants with additional information and contacts regarding foreclosure. Recently CMHP received \$25,000 in HUD Counseling dollars to continue to work on providing Home Stretch classes throughout central Minnesota.</p>

Creating a Resilient Region: The Central Minnesota Sustainable Development Plan -- Project Update

Activity Description	Update as of 7.30.11	Update as of 12.31.2011	Update as of 06.30.2012
Yellow highlight = Grant Application Pending, Grey highlight = application denied, Green highlighted = Application funded.			
		<p>community at large regarding the impact of and responses to foreclosure crisis.</p> <p>Consortium Gains Access to Commissioner of Minnesota Housing. CMHP along with Region Five Development Commission arranged for the Commissioner of Minnesota Housing, Mary Tingerthal, to speak to members of all workgroups. The address included the extent of foreclosures in Minnesota and articulated the governmental responses as well as seeking the input of participants.</p>	
<p>Activity 11: Increase residential (rental and commercial owner) energy efficiency. Clean Energy Resource Team</p>	<p>The work in Activity 8 will help facilitate the accomplishment of this activity. In addition, CERT and R5DC staff have written and submitted a proposal to the Governor's office to create an energy revolving loan fund. In addition, a proposal was written for an i6 grant to build the solar cluster within the region. (see activity 24 for more detail)</p>	<p>Continued work on PACE: CERT coordinator continues to work on the potential PACE program. The PACE paper was distributed to all RDC's. This framework is potentially a great economic development tool. The PACE paper was also submitted to Senator Al Franken. Cheryal Lee Hills (R5DC) and Angela Headlee (CERT) will be attending a meeting with Senator Franken October 24, 2011 to discuss moving the PACE model forward at least in the commercial realm until the problems with Fanny and Freddy are resolved at the federal level.</p> <p>Resilient Region Workshops. As described earlier. Cheryal Lee Hills, R5DC, and Angela Headlee, CERT, organized and presented an update on HUD at 5 Resilient Region Workshops in September. One area of focus was energy efficiency. 44 individuals from across the region participated. The participants valued the information regarding energy efficiency options (93%) and rated this as one of the most effective components of the entire workshop. (See Activity 2 Above for More Information).</p> <p>Ongoing Work to Locate Funding. CERT coordinator will continue to look for potential sources of funding to continue the outreach and education of energy efficiency.</p>	<p>April 26, Cheryal Hills attended a meeting at Senator Franken's St.Cloud office to discuss PACE financing. 8 others were on conference call from all over the State. Very distinguished group of legislators, Department of Energy, Dept. of Commerce, Pollution Control Agency who have committed to assisting Region Five in piloting a PACE program in Central MN.</p> <ol style="list-style-type: none"> Angela Headlee, CERT coordinator, and Cheryal Hills, Region Five, are currently working on the beginnings of a potential pilot project to be launched in rural Minnesota (Region Five) in the way of a start-up PACE program. They are working closely with Jeremy Kalin and Jeremy DeFiebre, consultants for the Division of Energy Resources. This would encompass small businesses, commercial, and multi-family projects (excludes residential due to the Fannie Mae and Freddie Mac hold-up). Cheryal attended a meeting with Al Franken's office staff and others to get the ball rolling on the rural PACE program. Angela is currently in the process of applying for a Bush Fellowship to continue Energy and Sustainability education at a grassroots level. The Fellowship would allow Angela the opportunity to

Creating a Resilient Region: The Central Minnesota Sustainable Development Plan -- Project Update

Activity Description	Update as of 7.30.11	Update as of 12.31.2011	Update as of 06.30.2012
Yellow highlight = Grant Application Pending, Grey highlight = application denied, Green highlighted = Application funded.			
			continue the Neighborhood Energy Workshops (NEWs) and would bring the Sustainable Communities education down to a household level. She would incorporate her current CERT work plan into her Fellowship along with continuing to move the HUD work forward at a regional, local, and individual level.
<p>Activity 12.: Determine the multi-modal transportation options available throughout the entire region to ensure mobility needs for individuals and workforce are met. R5DC – Transportation Dept.</p>	<p>R5DC and the transportation workgroup are building on and coordinating with the work of MN DOT's local human service coordination plan and transit investment plan (MNGO).</p> <ul style="list-style-type: none"> Specifically the MNGO local human service coordination plan is looking at mobility needs throughout the region. Over the last few months this plan has brought together transit providers, county human service agents, central Minnesota council on aging among others to look at strategies and projects to meet the needs mainly of local income, elderly and disabled and coordinate and determine gaps in service or areas that can be better served. The final plan and strategies will be available this fall and outcomes, projects, and strategies will tie in with the 5-county regional plan. In addition The MNGO project is also looking at multi modal planning and incorporating it into their 50-year plan. This included outreach and visioning sessions to look at transportation options and where/how MN DOT should be 	<p>CLC to Expand Transit Options: The main higher education institution within the region is Central Lakes College, which has two campuses in the region that are separated by 30 miles that cross all five counties. R5DC Transportation department met with communities and transit providers to discuss transit expansion of transit offerings between the two campuses. R5DC will apply to USDA on behalf of the consortium for Technical Assistance to walk the consortium through the feasibility of this concept.</p> <p>Phase I Trail Underway: The engineers are working on Phase 1 plan to expand the Camp Ripley Veterans State Trail.</p>	<p>Working with the City of Pine River and Brainerd/Crow Wing Transit to consolidate Pine River Ride with us Bus with Brainerd/Crow Wing Transit. This will untimely save the City of Pine River money and potentially allow a transit service that will connect them to a Region Hub (Brainerd/Baxter) compared to their current system that only operates with the City of Pine River.</p> <p>The Final CRVST trail open house will be June 7 at this meeting The Department of Natural Resources (DNR) invites anyone with an interest in the Camp Ripley/Veterans State Trail to attend an open house in Little Falls on Thursday, June 7, 2012. This is the third and final open house to be held during the master planning process for the Camp Ripley/Veterans State Trail. DNR staff, consultants, city, county and regional staff, and trail supporters will discuss the draft master plan, display maps, potential trail alignments and other trail information, and answer questions about the master planning process and next steps.</p> <p>On May 2nd Region Five held a meeting of the transit providers in the Region at the meeting we discussed how to better align resources and identify coordination projects for 2013 under funding sources:</p> <ul style="list-style-type: none"> Job Access Reverse Commute/New Freedom/5310 Department of Human Services Community Service/Community Services Development Grants

Creating a Resilient Region: The Central Minnesota Sustainable Development Plan -- Project Update

Activity Description	Update as of 7.30.11	Update as of 12.31.2011	Update as of 06.30.2012
<p>Yellow highlight = Grant Application Pending, Grey highlight = application denied, Green highlighted = Application funded.</p>			
	<p>prioritizing in the future.</p> <p>Region Five has also completed a regional trails inventory showing the different trails network and connections throughout the state.</p> <p>Two trail projects Camp Ripley Veterans State Trail (CRVST) and Staples Friends of the Trails are underway to develop trails to encourage healthy activity communities, while increasing the quality of life. Funding was secured in the amount of \$50,000.00 to complete the feasibility of these trails initiatives.</p> <p>As walking and biking have/continue to become an increasing trend so has the idea of Complete Streets. The main concept behind Complete Streets is taking into consideration other modes of transportation when planning and designing next strategies would include having cities and counties sign/promote a complete streets resolution. Complete Streets is one of the recommendations coming out of the Transportation Workgroup as well.</p> <p>On May 9th, members of the consortium met with the MN DOT Standing Committee to Advance Modal Planning Integration (SCAMPI) to brief the committee on the region-wide consortium and to determine ways to work together.</p> <p>Transit meetings being set up between city mayors, CLC President, School Districts, City Economic Development organizations, Lakewood</p>		<ul style="list-style-type: none"> • Other sources, such as private foundations <p>Unintended Outcome – Active Transportation Grant. R5DC received a \$250,000 4-year grant from Minnesota Department of Health to work on Active Transportation within the five-county area.</p> <p>Unintended Outcome -- Central Lakes College Pilot Van Shuttle between Brainerd and Staples Minnesota. CLC is using institutional resources to pilot providing a shuttle between the college's two campuses and businesses located in Brainerd and Staples.</p> <p>Unintended Outcome – Joint Venture Saves Pine River Transit. Pine River was at the risk of losing its transit but a joint venture between Pine River and Brainerd will save this regional-transit option.</p>

Creating a Resilient Region: The Central Minnesota Sustainable Development Plan -- Project Update

Activity Description	Update as of 7.30.11	Update as of 12.31.2011	Update as of 06.30.2012
Yellow highlight = Grant Application Pending, Grey highlight = application denied, Green highlighted = Application funded.			
	<p>Health System CEO and other businesses to establish a transit system from Staples campus to Brainerd campus.</p> <p>R5DC Executive Director is the newest member of the University of MN Transportation Studies Executive Committee, serving as the rural voice.</p>		
<p>Activity 13: Work with state and local authorities to better understand and develop strategies that consider the connection between land use and transportation in zoning, and economic development decisions thereby seeking to enhance quality of life in communities. R5DC – Transportation Dept.</p>	<ul style="list-style-type: none"> State: Several independent conversations have transpired with state commissioners including MN Housing, MN DOT, Dept of Ag and the Department of Employment and Economic Development as to the importance of multi-agency sustainable community strategy development. Most agencies are willing but lack the personnel to begin such a conversation. The City Visits began this conversation a year ago with all of the cities in each county being convened to discuss how jurisdictions can work together in these stressed economic times. The conversations led to mutual aid agreements whereas communities are conducting joint purchasing and training as well as sharing employees for the very small towns. 	<p>State and National Connections Helping to Advance Activity 13: Conversations with the Governors Institute on Community Design, the Twin Cities Met Council and the MN State Director of USDA; Colleen Landkammer have begun to ask if the GICD would be an opportunity for MN to advance this activity.</p> <p>Through "City Visits" Cities and counties continue to seek innovative ways to collaborate in efforts to provide services that are cheaper, faster and better.</p> <p>Unintended Outcome: Because of the Relationships Formed through the grant with EPA, R5DC was asked by EPA to submit Brownfield Assessment Applications for five-county are projects \$400,000(Also noted below in Activity 26)</p>	<p>Advice given in DC regarding ways DOT, HUD, EPA, USDA, and EDA can work together. Region Five was invited, as a high performing grantee, to attend the White House Forum on Regional Innovation in Rural America. At that time we talked about how the issues of land use, economic development and housing, and transportation are so inter-related, especially in rural places. We encouraged in our written materials and oral presentation "Cross-Department/Grant Collaboration." Using existing resources and reconfigure grant programs to be cross-department with a) one application, b) one department as the lead, and c) one evaluation report. (This was the case for the Sustainable Communities Planning and Challenge Grants)." We are also convening our federal, state, and local jurisdictions at our finalization meeting/celebration in August. At that time we are asking federal and state jurisdiction representatives to discuss how they are working across disciplines.</p>
<p>Activity 14: Expand utilization of Green Cities program, which is a "neighborhood sustainability standard." Clean Energy Resource Team</p>	<ul style="list-style-type: none"> A number of presentations have been given in the region: a) Staples LEAP group (17 participants) b) Brainerd City Council (25 participants) c) city presentations (54 individuals from 29 cities), d) land-use work group (19 participants), and e) Workgroup #4 pre-session (15 participants). Breezy Point, Pine River, Jenkins and 	<p>Local Application of GreenStep Cities Highlighted: A regional CERT meeting was held August 30, 2011, 9 am – 12 noon in Breezy Point to promote the GreenStep Cities program. There were 21 who participated and 5 speakers provided a state and local perspective. The evaluations indicated that this workshop was valued: 92% rated each session as effective (Minnesota GreenStep Cities; Best Practices; Getting Started in Local Communities; Lessons Learned from Local Communities, HUD Project Update, and</p>	<p>GreenStep Cities outreach and promotion is an ongoing part of the CERT regional coordinator's work plan:</p> <ul style="list-style-type: none"> A meeting is scheduled in Rothsay, MN (outside of the Region Five territory but all of Region Five will be invited to attend). This meeting will include a presentation on GreenStep Cities. It will take place June 6, 2012. The CERT coordinator, Angela, has reached out to

Creating a Resilient Region: The Central Minnesota Sustainable Development Plan -- Project Update

Activity Description	Update as of 7.30.11	Update as of 12.31.2011	Update as of 06.30.2012
Yellow highlight = Grant Application Pending, Grey highlight = application denied, Green highlighted = Application funded.			
	<p>Royalton have signed Green-Steps-Cities resolutions; and resolutions are pending in Nisswa and Pequot Lakes.</p> <ul style="list-style-type: none"> HDT applied for a Green Corp person to help with promoting Green Steps Cities with cities located on Highway 310 – thereby creating a Green Steps Corridor. Funding for this is pending. 	<p>HUD Project Planning Form).</p> <p>Resilient Regional Workshops Promote GreenStep Cities. As stated previously, GreenStep Cities was promoted in the HUD Resilient Region Workshops. There were 44 individuals who attended. 75% of the attendees rated the information regarding the Green Step Cities program as effective.</p>	<p>66 cities (Region Five) through email, snail mail, and or in person presentations to date.</p> <ul style="list-style-type: none"> Angela has met with 3 of the 5 economic development practitioners in the region, one-on-one, to discuss GreenStep Cities and how this can be an economic development tool. She will meet with the other 2 in the coming weeks. Angela also presented GreenStep Cities to Colleen, USDA and Matt Dalbey, EPA. No additional cities have signed on to GreenSteps since the previous update. Nisswa is bringing to their city council and Emily is bringing to their city council. Brainerd is still in the research phase.
<p>Activity 15: Begin to meet DNR Shoreland Standards on a regional level. Envision MN</p>	<p>Paul Radomski of the DNR provided technical assistance to Crow Wing County, which adopted many of the DNR recommendations on March 22, 2011.</p> <p>Mr. Radomski also presented at the Minnesota Waters conference in St. Cloud in April 2011. This conference was attended by many lake association members and elected officials.</p> <p>Two Government Training Workshops were held this spring, one in Brainerd (rural emphasis) and the other in Shoreview (urban emphasis) to provide details on adoption of the new draft shoreland standards in Crow Wing County. Good attendance and reviews. 57 officials participated – many from Region Five.</p> <p>There has been little progress in the other four counties, although Todd and Cass are seriously considering revising their shoreland ordinances</p>	<p>The shoreland rules recommendations to the legislature, which were refused by former Governor Pawlenty, have sat for more than 18 months. Therefore, the legislature must reinstate rulemaking authority to the DNR, so they can again present their completed recommendations to Governor Dayton for his approval.</p> <p>On September 23rd, Phil Hunsicker of Envision Minnesota presented at the Third Annual Legislative Forum held in Walker Minnesota. Phil's presentation was on the status of the shoreland rule recommendations and the need for the legislature to get them passed during this legislative session. Area legislators were present to hear about priority issues affecting lakes in North-Central Minnesota. Representative Denny McNamara, the chair of the House Environment Committee, said they would get the rules passed through this legislative session. Senator John Carlson wouldn't commit one way or the other.</p> <p>Locally, Crow Wing County was recognized with a Lake-Friendly Development Award on October 20th for revising their shoreland ordinances based largely on the DNR</p>	<p>Progress as of 6/7/2012: On February 7, 2012, Phil Hunsicker of Envision Minnesota and some of his conservation colleagues from MCEA, MNCOLA, MSRPO and others met with DNR Commissioner Tom Landwehr and other DNR officials to discuss next steps for getting the shoreland rules recommendations moved forward at the legislature. The DNR informed us that the rules were being "scrubbed" by DNR personnel to eliminate redundancy, to simplify complex concepts, and to make the package of rules less intimidating for a legislator to pick up, read and understand. Meanwhile, legislators were asked to sponsor a bill to return rulemaking authority back to the DNR so they can present the package of recommended standards to Governor Dayton. No bill was presented at the last legislative session. Conservation organizations continue to collaborate to influence legislators on the need for updated shoreland standards. Conservation groups will continue pushing for legislative action. With the recent demise of Minnesota Waters, and the absorption of Minnesota Waters' programs by Conservation Minnesota, which has considerable</p>

Creating a Resilient Region: The Central Minnesota Sustainable Development Plan -- Project Update

Activity Description	Update as of 7.30.11	Update as of 12.31.2011	Update as of 06.30.2012
Yellow highlight = Grant Application Pending, Grey highlight = application denied, Green highlighted = Application funded.			
	and they were waiting to see how the process went in Crow Wing before they began.	recommendations. Todd County has begun to discuss revision of their shoreland ordinances based on the success in Crow Wing.	experience lobbying at the Capitol, it is hoped that the shoreland rules revisions will become a priority during the next legislative session.
<p>Activity 16: Utilize micropolitan Planning Best Management Practices (BMP's) as a regional tool. Envision MN</p>	<ul style="list-style-type: none"> The good news is that the Micropolitan BMPs have been promoted in the land use work group as a success to scale up throughout the region. In fact, one idea that came out of the Micropolitan Project – standardization of land-use terms and definitions – is one of the recommendations coming out of the land use work group. The Micropolitan Project applied for a \$270,000 grant from LCCMR to expand the success throughout Crow Wing and southern Cass Counties. The bad news is that at the eleventh hour, new GOP members of the LCCMR recalled all recommended projects for review. This included the Micropolitan Project. Also, all six of the original LGUs in the Micropolitan Project have not yet signed the final agreement, which has slowed down the process. In addition, the Brainerd Chamber, Realtors and the Builder's Association, which had all supported the updated and standardized rules and ordinances in the Micropolitan Project, fought with vigor the new Crow Wing County ordinance revisions. Sensing a lack of support for the Micropolitan Project, Crow Wing County withdrew their application for funding from LCCMR. 	<p>Envision MN Most Recent Update: No progress to report.</p> <p>Unintended Outcome from HUD Convening work – Fire Districts approached Cheryal Lee Hills R5DC to coordinate work across the region. Staff from regional Fire Districts met with R5DC to discuss how they can begin conducting business differently; including, shared purchasing, training and creation of a regional fire district. Cheryal Hills spoke to the regions fire chiefs on November 14 to pursue these activities. A proposal was written and is being funded by Blandin Foundation (funded \$50,000 by Blandin)</p> <p>Unintended Outcomes from HUD Work – EPA approached Cheryal Lee Hills R5DC to develop a proposal to support wastewater treatment work. Wastewater Treatment. Working with Midwest Assistance Program on a funding application to support wastewater treatment facilities technical assistance to 10 communities who have failing wastewater treatment facilities. EPA. EPA requested a pilot in one community and depending on the outcomes would be open to a proposal to reach an additional 9 communities. \$25,000 to pilot test technical assistance for treatment facilities for 1 community within the five-county area.</p>	<p>Envision Minnesota: Progress as of 6/7/2012: No progress to report</p> <p>R5DC: February 27th, a presentation given by the Midwest Assistance Program (MAP) and 21 local representatives from County Environmental Service Managers, Soil and Water Conversation Districts and township supervisors to learn how regionally we can address our failing wastewater treatment facilities and septic system inspections. From this meeting a grant was submitted by MAP to EPA for \$25,000.00 to expand their technical assistance in our region.</p> <p>Work Continued, without funding, with the Micopolitan Project. Memorandum To: Lisa Paxton, Executive Director, Brainerd Lakes Chamber of Commerce Fr: Cass County and Crow Wing County staff Re: Gull Lake Micropolitan Project Update - April 26, 2012</p> <p>Thank you for the invitation to update our role in the Gull Lake Micropolitan Project.</p> <p>We first need to remind ourselves what we promised to do, so please bear with us in our review of the project background.</p> <p><u>Background</u> United States Micropolitan Statistical Areas, as defined</p>

Creating a Resilient Region: The Central Minnesota Sustainable Development Plan -- Project Update

Activity Description	Update as of 7.30.11	Update as of 12.31.2011	Update as of 06.30.2012
<p align="center">Yellow highlight = Grant Application Pending, Grey highlight = application denied, Green highlighted = Application funded.</p>			
			<p>by the U.S. Census Bureau and the Office of Management and Budget (OMS), are urban areas in the United States based around a core city or town with a population of 10,000 to 49,999. The Micropolitan area designation was created in 2003. Like the better-known metropolitan area, a Micropolitan area is a geographic entity used for statistical purposes based on counties and County-equivalents. The OMS has identified 577 such areas in the nation. The Micropolitan area surrounding Brainerd/Baxter was ranked 28th of the 100 fastest-growing non-metropolitan communities in the U.S. in 2005.</p> <p>In May, 2005, the Brainerd Lakes Area Chamber of Commerce, Regional Business Council recognized the need for a comprehensive regional planning effort. In May, 2006, Cass and Crow Wing Counties, along with local municipalities, business, non-profits, and citizens at large, held three public meetings to identify priorities for preserving our natural resources. Over 70 resolutions of support from units of government, organizations, individuals and were adopted and approximately 100 people participated in developing the list of shared priorities.</p> <p>In January, 2007, the "Regional Planning Sensational Seven Work Groups" formed for: government services, wastewater, storm water, transportation, commercial land use, residential land use, and public lands. In the summer 2007, the Region 5 Development Commission agreed to support implementation of the plan in partnership with the Chamber. In October, 2007, the Micropolitan Planning Taskforce presented a master list of shared priorities to a joint meeting of the Cass and Crow Wing County Boards, and a search for funding and support resources was launched.</p>

Creating a Resilient Region: The Central Minnesota Sustainable Development Plan -- Project Update

Activity Description	Update as of 7.30.11	Update as of 12.31.2011	Update as of 06.30.2012
<p>Yellow highlight = Grant Application Pending, Grey highlight = application denied, Green highlighted = Application funded.</p>			
			<p>It was determined that the initial implementation strategy would develop multi-jurisdictional plans for the four highest priority goals in a pilot area consisting of the jurisdictions surrounding Gull Lake: Crow Wing and Cass Counties, the Cities of East Gull Lake, Lakeshore, Nisswa, and Fairview Township. Grant funding for the pilot project was secured from a USDA grant and the Initiative Foundation. The four priority goals were:</p> <ul style="list-style-type: none"> - Develop or select model waste water and storm water standards for incorporation in ordinances - Research, analysis, and dissemination of comprehensive planning terms, definitions, policies, and processes - Develop a multi-jurisdictional recreation strategy for trails, parks, and recreational facilities - Develop or adopt model development guidelines that encourage expansion of affordable infrastructure, performance-based development, and conservation development when appropriate <p>In 2008, consultants Pat and Teri Hastings were retained by the Project to facilitate the pilot project. They brought representatives of the LGU's together to discuss the priority goals and began background research. In February, 2010, John Sumption assumed the facilitation role.</p> <p><u>Comments by Cass County and Crow Wing County on the status since the last report of June 2, 2010</u></p> <ul style="list-style-type: none"> - Begin implementation process <ul style="list-style-type: none"> o The task force approach has been replaced with ongoing contact organized by project (fewer government meetings)

Creating a Resilient Region: The Central Minnesota Sustainable Development Plan -- Project Update

Activity Description	Update as of 7.30.11	Update as of 12.31.2011	Update as of 06.30.2012
<p>Yellow highlight = Grant Application Pending, Grey highlight = application denied, Green highlighted = Application funded.</p>			
			<p>and less consultant cost)</p> <ul style="list-style-type: none"> - Model wastewater and storm water standards <ul style="list-style-type: none"> o Awaiting State legislation; County staff are in agreement with a common approach o Landscape and "dirt movers" workshop completed o Initiated a watershed based SSTS inspection project for City of Lake Shore, Lake Margaret watershed and SSTS inspection project for City of East Gull Lake and Sylvan Lake Assn. o Nine County project with area SWCD's to install shoreline buffers and stormwater management practices in riparian areas including Gull Lake o Participated in R5DC workshop facilitated by the Midwest Assistance Program to develop criteria select to select a wastewater improvement project. Workshop included Environmental Services and SWCD's from the 5 surrounding Counties. This was a result of the HUD Sustainable Communities Planning Grant o Prescription drug –Take It To The Box implemented o Cass SWCD along with Lake Margaret stakeholders, Grazing Association and Leader Lions, sponsored the second annual field day in Lake Shore in June, visiting 2 area farms and shoreline buffer areas on Lake Margaret - Research, analysis and dissemination of

Creating a Resilient Region: The Central Minnesota Sustainable Development Plan -- Project Update

Activity Description	Update as of 7.30.11	Update as of 12.31.2011	Update as of 06.30.2012
<p align="center">Yellow highlight = Grant Application Pending, Grey highlight = application denied, Green highlighted = Application funded.</p>			
			<p>comprehensive planning terms, ordinance terms, definitions and processes</p> <ul style="list-style-type: none"> o Ordinance scheduled for update summer 2012 - definition of resort, agricultural easements, and gravel pits are hot topics o Permit formats – Electronic submission and common format study underway o Winter 2012-13 realtors land use workshop with GLAR planned o Ongoing staff communication with Central Lakes Zoning staff <p>- Area parks, trails, public use and multi-jurisdictional recreation taskforce that develops coordinated recreation strategy</p> <ul style="list-style-type: none"> o East Gull Lake – completed o Lake Shore – feasibility study funded o Working with the City of Lake Shore and Lake Shore Stakeholders group to develop a connector trail to Nisswa. o Pillager to Paul Bunyan via Baxter – study underway as part of Veterans Trail o Inventory existing trail alignments – Website access improvements <p>- Model conservation development guidelines</p> <ul style="list-style-type: none"> o Incorporated in prior ordinance update o Conservation easements Aitkin, Crow Wing, and Cass – Aitkin wild rice lake easements (LSOHC) o LLAWF – Donated conservation easements (LSOHC) <p>- Communicate the pilot area successes to the Micropolitan area and duplicate process with funding available</p>

Creating a Resilient Region: The Central Minnesota Sustainable Development Plan -- Project Update

Activity Description	Update as of 7.30.11	Update as of 12.31.2011	Update as of 06.30.2012
Yellow highlight = Grant Application Pending, Grey highlight = application denied, Green highlighted = Application funded.			
			<ul style="list-style-type: none"> o County EGL zoning – Still working well o Plan to find Micro updates – Chamber will post on updated website o Mobile HHW pickups o Land Department joint projects – inventory, replanting, demolition, photos, and sustainable forest certifications o Participation in the HUD Region Five Sustainable Communities Planning Initiative <p>Our Boards' remain committed to intergovernmental cooperation and thanks the Brainerd Chamber for facilitating the same.</p>
Activity 17: Expand existing success of Minnesota Renewable Energy Marketplace – MNREM. Clean Energy Resource Team	<ul style="list-style-type: none"> • One meeting was held with Teresa Kittredge, Executive Director of MNREM. MNREM is kept up to date quarterly on HUD regional planning progress and was notified of the Preferred Sustainability Status (PSS) points. • Current conversations with Teresa Kittredge have created an awareness of a potential collaboration involving RUPRIE that will move forward renewable energy technologies. 	<p>The CERT coordinator continues to update MNREM quarterly. (February 2011, May 2011, and August 2011)</p> <p>Rural Data: The lack of rural Minnesota placed based planning data has been a discussion with several consortium partners. The U of MN Morris campus, MN Renewable Energy Marketplace, all of Minnesota's Regional Development Commissions, Department of Employment and Economic Development and a few foundation partners. (IF and NWAFF) The need to create the framework to collect the data and house it to a portal that does more than dump data - - a site that tells the story behind the data is the mission of these agencies. The process to collect the data from the MANY different sources and the necessity to collect from public health practitioners, business consultants, GIS departments and more, will be discussed as we draft a funding application to support this work.</p>	<p>CERT & R5DC continue conversations with MNREM. MNREM, Teresa Kittredge, has been updated to the status/progress of the HUD grant and has been repeatedly invited to participate. Cheryl keeps an open line of communication with Teresa.</p> <p>To date we are unaware of any grants or funding.</p>
Activity 18: Expand the focus of Initiative	This is in process. The Healthy Communities program has been redesigned and the name has been changed to Thriving Communities	During this time period the Foundation has continued to work with the communities of Pine River, Royalton, and Randall with either the Healthy Communities Partnership sustainable	Randall Thriving Communities team has successfully raised over \$25,000 to accomplish their goal of a new emergency siren for the community. They have also

Creating a Resilient Region: The Central Minnesota Sustainable Development Plan -- Project Update

Activity Description	Update as of 7.30.11	Update as of 12.31.2011	Update as of 06.30.2012
Yellow highlight = Grant Application Pending, Grey highlight = application denied, Green highlighted = Application funded.			
<p>Foundation's Healthy Communities efforts. Initiative Foundation</p>	<p>Partnerships. The new approach includes: a) a shorter timeframe for planning, b) a greater focus on economic development, and c) front-end loading of resources. The first group that will be affected by this activity is the city of Randall in Morrison County. This community team has received leadership and sustainability training and will hold their community input meeting on June 28th. By August they will have a sustainable plan in place and will receive grant funds of up to \$20,000 to carry out those plans over the coming year.</p>	<p>model or our new Thriving communities Initiative that shares the same sustainable community's principles. In each of these communities the program works with communities to develop and implement a sustainable vision for the future. The city of Longville is planning to apply for the Thriving Communities Initiative and recruiting visits there continue. \$12,500 has been granted in these communities during this time period.</p>	<p>carried out several youth activities and have had a spring community Treasures and Clean up day. They will be hosting the Minnesota Design Team on May 31- June 2nd to look at design ideas to improve community resilience and economic Vitality.</p> <p>Pine River HCP team has applied for assistance to Envision Minnesota to do a Main Street project that will help with planning to increase transportation options and to move bikers and walkers safely between the Paul Bunyan Trail Visitor center and the newly renovated park on the other end of main street. This will make the community more resilient as well as building a stronger economy. The community Garden is getting ready for another season as is the Farmers market. The Park Task force held a successful fund raiser on May 19th to help complete the beach at the park.</p> <p>Wadena HCP team continues to work on raising local funds toward replacing the community center that was destroyed in the Tornado that struck two years ago and has so far received well over \$1,000,000 in cash and pledges for that project. The community is also working on a new comprehensive plan that will be completed within this calendar year.</p> <p>The city of Royalton HCP team continues to work on raising funds and doing work to complete the Splash Pad park project.</p>
<p>Activity 19: Expand the Hunt Utility Group/Happy Dancing Turtle Sustainable Community</p>	<ul style="list-style-type: none"> Staff members from Hunt Utility Group/Happy Dancing Turtle Sustainable Community Programs are participating in all four workgroup meetings. The fall educational period kick off will be 	<p>The Collage of Sustainability Provides 101 on Sustainable Land Use, Economic Development, Housing, Health, and Transportation. The Collage of Sustainability was held at the Pine River campus on Oct 13. Although final numbers are being verified, there were nearly 80 individuals who attended the event to hear state and local experts on the</p>	<p>Clean Energy Resource Teams continues to promote all of the Hunt Utility Group work on a Regional Level. Angela, Stacey and Cheryal took Colleen, USDA and Matt Dalbey, EPA on a tour of the campus at HUG/HDT. Cheryal is working extensively with HDT in the area of</p>

Creating a Resilient Region: The Central Minnesota Sustainable Development Plan -- Project Update

Activity Description	Update as of 7.30.11	Update as of 12.31.2011	Update as of 06.30.2012
Yellow highlight = Grant Application Pending, Grey highlight = application denied, Green highlighted = Application funded.			
<p>Programs, incorporate on regional level. Clean Energy Resource Team</p>	<p>held at the HUG/HDT campus as a way to help the region explore the various Sustainable Community Programs and to learn more about sustainability.</p>	<p>various topics billed to be a 101.</p> <p>Speakers included: Chuck Marohn, Community Growth Institute; John Bailey, Envision Minnesota; Ed Northway, Northway Construction; Molly Berg, Habitat for Humanity; Dug Swanson, Hunt Utilities Group; Bill Reinke, Central Minnesota Housing Partnership; Brad Hokanson, U of MN College of Design; Joel Haskard, CERT; Arlene Joes, the Farm at St. Mathias; John Sumption, Sumption Environmental; Jim Chamberln, Happy Dancing Turtle; Neil Linscheid, U of M Extension; Institute for Rural Health; Cindy Carlsson, MN DOT; Frank Douma, Humphrey School of Public Affairs.</p> <p>There were 15 who toured the campus to learn about the Hunt family's sustainability efforts.</p>	<p>local foods distribution.</p> <p>HUD visitors requested additional information from HDT and wanted to know more about plans to build affordable housing in upper Cass County.</p>
<p>Activity 20: Expand jobs in high paying growth sectors and incumbent worker training AND expand job creation opportunities for low-income residents through a focus on access to skills training and pathways to career-ladders. R5DC- Economic Dev. Dept.</p>	<ul style="list-style-type: none"> Two loan applications totaling \$140,000 were approved this spring for manufacturing companies located in Morrison and Wadena counties. The partners on this work included Community Development of Morrison County, Initiative Foundation, and Todd-Wadena Electric Co-Op. The combined financing packages totaled over \$1million and included over \$700,000 in private investment. The Wadena County project retained 10 jobs and will create 5 immediate positions. The Morrison County project enabled a start-up company to expand and resulted in 5 jobs. R5DC Executive Director participates in the instruction of a Women's Fund sponsored <i>Presenting Yourself</i>, series of 3, 90-minutes seminars on becoming successful 	<p>Women's Fund continues to Support Local Low-income Women. A second series of Women's Fund workshops have been launched in November 2011. Three sessions have been completed (18 students).</p> <p>Student Internships through the U of MN Help Students Develop Skills in Growth-Sector Areas. Fall U of MN students have been hired and have begun working, here is the rundown of students on the CMSDP project:</p> <p>Zach Tagar, a Masters in Geographic Information Science student, is continuing the work he began this summer on creating alternative future scenarios. This work will continue into the spring refining the scenario selected by community members. Zach holds an MA in International Relations, and a BA in Political Science.</p> <p>Michael Dorfman, an Environmental Design and Landscape Architecture graduate student, analyzed local comprehensive</p>	<p>Women's Fund completed the second series of "Presenting Yourself" workshops. Cheryal Hills acting as mentor and attending each of these meetings. One of the students obtained a scholarship to attend a grant writing workshop from R5DC as a result of this work. Also, Central Lakes College is in the process of formally developing an effective Internship Program.</p> <p align="center">INTERNS 2012</p>

Creating a Resilient Region: The Central Minnesota Sustainable Development Plan -- Project Update

Activity Description	Update as of 7.30.11	Update as of 12.31.2011	Update as of 06.30.2012			
Yellow highlight = Grant Application Pending, Grey highlight = application denied, Green highlighted = Application funded.						
<p>employees. There were approximately 18 low-income women from Central Lakes College who participated in the professional development series.</p> <ul style="list-style-type: none"> Using leveraged resources from MN Power an i6 proposal for internships in the renewable energy industry was prepared. (see activity 24 for more detail) William Mitchell School of Law Community Development Clinic students conducting legal research for the regional planning project. Each of the 4 William Mitchell students will log 110 hours this summer as they complete their assignments. (See Previous Advisory Committee Report for their bios and projects). 	<p>plan policies for the five counties in the project, created a project photo bank, and will be assisting in public engagement activities. Michael is continuing this fall after starting on the project over the summer.</p> <p>John Sisser is a freshman majoring in Environmental Sciences, Policy, and Management with a focus on Law and Policy. John will be analyzing comprehensive plans for five cities in the project area, building on the previous county analysis.</p> <p>Mike Brandt is a junior studying Economics at the Carlson School of Business. Mike will be assisting in the production of webinars by faculty on key issues identified by the project workgroups.</p> <p>Ben Ruth is a junior focusing on Policy, Planning, Law and Society within the Environmental Sciences, Policy, and Management major. Ben has an Associate of Science Degree in Architectural Drafting/Design and CAD Technology and worked previously for a local architecture firm as a project designer. Ben will be doing research supporting the scenario work and researching indicators.</p> <p>Student Interns at the William Mitchell Community Development Clinic completed reports identified by workgroup leaders as crucial to developing the final plan. The following reports were completed and posted on Basecamp on December 31, 2011:</p> <p>Review of Local Zoning Ordinances for Housing Affordability Barriers by David J. Stellmach. Evaluation of 20 of Region 5 communities' zoning ordinances for barriers to housing affordability.</p> <p>Housing Barriers to Affordability by Susie Vang. Research paper on typical barriers to housing affordability found in zoning ordinances.</p>	Local Foods	CURA CAP, Colin Cureton	Initiative Foundation	Tad & Don Hickman	March to May or June 2012
		Local Foods	MN Corps VSA's - , Kayla and Jessie	MPCA /IF \$600. from Farm of St. Mathias	Arlene Jones	June 12 to August 6, 2012
		Local Foods	Americorps VISTA Amanda	Americorps, \$2,500 . from R5DC and \$2,500 from RSDP	Arlene Jones	12 months, August 2012 to June 2013
		Research	EDA Center or other	EDACenter \$1,000 . from R5DC, other=R5DC	Tad & Melissa/Jake	June 15 to September 15, 2012. 20 hrs

Creating a Resilient Region: The Central Minnesota Sustainable Development Plan -- Project Update

Activity Description	Update as of 7.30.11	Update as of 12.31.2011	Update as of 06.30.2012				
<p align="center">Yellow highlight = Grant Application Pending, Grey highlight = application denied, Green highlighted = Application funded.</p>							
		<p>Sustainability in Current Zoning Memo by Elizabeth Anne Lyons. Research paper evaluating two local zoning ordinances for sustainability concepts.</p> <p>Zoning Typology Memo by Elizabeth Anne Lyons. Research paper on zoning types with an emphasis on determining an effective land use decision process that operates better than current system.</p> <p>Variance Changes Memo by Elizabeth Anne Lyons. Research paper summarizing recent changes in Minnesota Variance Law.</p> <p>Microfinancing options by Holly Hinman and Caroline Devany. Evaluation of micorfinancing option for Region 5.</p> <p>Angel Investing Evaluation by Max Page. Evaluation of angel investing options for Region 5.</p> <p>Transportation Funding Summary Memo by David Howe. A summary of transportation funding systems in Minnesota with Region 5 priorities.</p>			from Haz. Mit.	a wk.	
			Active Transportation	MN Corps	MPCA	CLH & Jake	11 months, May 2012 to June 2013
			Randalls Design Team	Initiative Foundation, Annie	Initiative Foundation	Dan Frank	3 months, ends June 30, 2012
			<p>The time and value for the William Mitchell Law Students exceeds \$40,000. According to Diane Dube, William Mitchell Community Development Clinic Professor, "Otto Bremer Foundation ... funded this past year to work on projects in Greater Minnesota. Our Region Five work is one of 15 projects William Mitchell law students have done through the community development Clinic. The total number of hours is 1,208 – valued at \$40 per hour for certified student attorney time and \$15 per hour for interns and volunteers, that is worth \$40,620 (without including my time)."</p> <p>Morgan Twamley, a senior at St. Olaf majoring in Environmental Studies and Spanish, will serve as an intern for Envision Minnesota during the summer of 2012.</p>				
Activity 21: Build	Area Telco Providers Meeting. A meeting,	Broadband Effort Stalled. While every effort was made by	More than 32 computers have been distributed to				

Creating a Resilient Region: The Central Minnesota Sustainable Development Plan -- Project Update

Activity Description	Update as of 7.30.11	Update as of 12.31.2011	Update as of 06.30.2012
Yellow highlight = Grant Application Pending, Grey highlight = application denied, Green highlighted = Application funded.			
<p>on Blandin Foundation broadband work. R5DC – Community Dev. Dept.</p>	<p>scheduled for mid-April was set up with Bill Coleman (Blandin Foundation), Tony Mayer (WCTA), and Kevin Larson (CTC) to discuss how to bring all the area Telco providers together, but it was called off due to conflicting schedules. So far another meeting has not been established.</p> <p>PC's for People Initiative. As a partner in the Blandin Broadband project (Minnesota Intelligent Rural Communities MIRC), the Region Five Development Commission's role is to provide outreach and promotion to the other partners in the project. One of those partners is PC's for People. PC's for People is a non-profit organization that collects old computers and refurbishes them to donate to low income/disadvantaged individuals. The Region Five Development Commission has played an active role in promoting the establishment of a PC's for People affiliate franchise that would serve individuals within region 5. To date, Hughes Technology has been selected as the PC's for People franchisee.</p> <p>The formation of an advisory board is in the formative stages. All partners have expressed an interest in creating an advisory board that will be responsible for quality control, an equitable distribution of the workload and the sustainability of the project.</p> <p>The potential for the local affiliate PC's for People is to partner with the Cyber</p>	<p>R5DC, the Blandin Foundation and a couple Telco's...the Telecommunications companies would not meet for proprietary reasons.</p> <p>PC for People Project Receives Funding. A PC's for People franchise has been launched in the region. \$17,000 was acquired by R5DC with grants from Blandin and the Initiative Foundation to support this worthwhile regional effort.</p>	<p>low-income households via the PC's for People franchise.</p> <p>Unintended Outcome – Five County Fire Fighter Training. R5DC – Fire departments awarded grant from Blandin of \$50,000 to enhance region-wide collaboration to improve efficiency and effectiveness. This joint-venture training, which uses the internet for coordination and some of the training sessions, will improve the efficient use of limited county resources. (also mentioned above).</p>

Creating a Resilient Region: The Central Minnesota Sustainable Development Plan -- Project Update

Activity Description	Update as of 7.30.11	Update as of 12.31.2011	Update as of 06.30.2012
<p align="center">Yellow highlight = Grant Application Pending, Grey highlight = application denied, Green highlighted = Application funded.</p>			
	<p>Café, which is a non-profit organization out of Wadena that provides supervised internet access. Due to the high percentage of low-income individuals, and students in Wadena, the group sees this as an opportunity to provide the Café with a number of laptops to support this underserved demographic.</p> <p>Received a grant from the Initiative Foundation to purchase the PC for People franchise.</p>		
<p>Activity 22: Implement and expand the Farm-to-School local foods initiative. University of MN</p>	<ul style="list-style-type: none"> ▪ \$100,000 funding was secured in June 2011 to advance Farm to School efforts statewide, using a regional approach. This Minnesota Department of Agriculture Specialty Crop Grant program funding will be used to provide resources (food safety, local foods use regulations, time of 5 local Community Nutrition Educators), a networking and informational workshop on Farm to School in the Central Region, and provide awards (cash or equipment) to the regional school district and farmers with the greatest participation in Farm to School programming. (full proposal available) ▪ Final report on a USDA Sustainable Agriculture Research and Education grant the funded Farm to School organizing efforts statewide and helped build capacity with University of Minnesota Extension to deliver Farm to School support to local school districts (there are U of M Extension Community Nutrition Educators in every county of the State, including five full time in 	<p>Farm to School Leadership Team. A statewide Farm to School Leadership Team was established by University of Minnesota Extension and the Minnesota Department of Health. Our project has representation on that team through Kathy Draeger who has participated in each of the four facilitated meetings. The group worked to have September designated as statewide Farm to School month by Governor Dayton</p> <p>Local School District Participating in Farm to School. Brainerd School District is participating in Farm to School with area farmers, including consortium member Arlene Jones of The Farm on St. Mathias.</p>	<p>U of MN Report:</p> <p>The U of M Central Regional Partnership provided seed funding to the Happy Dancing Turtle Foundation to support the formal establishment of a food distribution system linking producers and consumers and feasibility of a season extending, farmer-friendly food processing facility:</p> <ul style="list-style-type: none"> a. Access to fresh, local foods will be improved; b. Central MN schools will be transformed into healthy food environments for children by utilizing local, fresh foods in the school lunch program; and c. Local farmers and producers will be supported, raising family income and providing other economic development opportunities.

Creating a Resilient Region: The Central Minnesota Sustainable Development Plan -- Project Update

Activity Description	Update as of 7.30.11	Update as of 12.31.2011	Update as of 06.30.2012
<p align="center">Yellow highlight = Grant Application Pending, Grey highlight = application denied, Green highlighted = Application funded.</p>			
	<p>the Central region). Full report is available upon request.</p> <ul style="list-style-type: none"> ▪ The Wadena-Deer Creek school system is incorporating farm to school into their new school. They are including high tunnels (for production), processing capacity, and educational curriculum in local foods for their 2012 school opening. Funding secured from the U of M Central Regional Partnership. ▪ F2S policies, conversations with Tim Penny and future presentation invite to Southern MN Initiative Foundation 		
<p>Activity 23: Develop an effective local foods distribution and climate control storage system. University of MN</p>	<ul style="list-style-type: none"> ▪ R5DC and the U of M Central Regional Partnership jointly oversee the work of Kim Burkett, a VISTA worker, who is creating an action plan for distribution and cold storage for the six schools in the Brainerd school district. R5DC will soon apply for \$350K to work on the local foods distribution, climate controlled storage. Todd County is bonding for \$500,000 to build a community kitchen as part of their Browerville Community Center redevelopment! ▪ A kick off meeting for the Lakewood Health System was held in June 2011 to creating model system for farm to institution in the health care area. Support for a Community Assistance Program (CAP) student was awarded by the U of M and a student has been hired to work the summer of 2011 creating a model system. Lakewood has cold storage at the Staples Ag Center and a 	<p>Business Plan Developed. Business plan for the Neighborhood Farm Marketplace and Cooperative was developed by Region 5 Development Commission with support from the State Health Improvement Program and the U of M Central Regional Partnerships. The business plan was thoroughly reviewed by USDA Rural Development staff and revised based on feedback. The team is using the feedback to apply for a USDA grant of \$320,000 to support the development of the local foods distribution system. This is a coop model that is grower and buyer driven that includes climate controlled storage hubs. The match to this grant was 1:1. The Lakewood Health Systems effort has been folded into this single application, making it a regional initiative.</p> <p>Local Foods Access Plan Will Be Available Soon. A U of M supported student worked Lakewood Health Systems on a local foods access plan that will be available in the coming weeks.</p> <p>USDA Application Submitted. A USDA Community Food Security grant is being developed by producer Arlene Jones</p>	<p>U of MN Report: Central Region Food systems Working Group A Central Region food systems working group has been brought together and convenes regularly. At a meeting on March 13, 2012 the work group issued a statement of support to work on the following three projects:</p> <p>Wadena Deer Creek school high tunnel project, Work continues on the high tunnel system including gathering commitment from local growers to assist with construction and consultation, working with local organizations to assist financially. Additionally, work continues to build a locally grown sustainably produced food curriculum in a joint effort between Wadena Deer Creek Schools and M State's Sustainable Food Production Program based out of Fergus Falls.</p> <p>Lakewood Health System LHS will seek to continue the work done by CURA CAP student research assistant Lisa Myslajek which resulted in considerations and recommendations for a local food</p>

Creating a Resilient Region: The Central Minnesota Sustainable Development Plan -- Project Update

Activity Description	Update as of 7.30.11	Update as of 12.31.2011	Update as of 06.30.2012
Yellow highlight = Grant Application Pending, Grey highlight = application denied, Green highlighted = Application funded.			
	<p>commercial kitchen.</p> <ul style="list-style-type: none"> A food industry cluster analysis was done for Central Minnesota by the Minnesota Department of Employment and Economic Development. The analysis was presented and the Minnesota Rural Partner's Rural-Urban Partnership meeting in April 2011. That report is available. 	<p>(Farm at St. Mathias) and Region Five Development Commission.</p> <p>Todd County Bonding for Community Kitchen. Todd County is still in the process of bonding for their community kitchen/community center. Region Five is working with Todd County on a business plan for this Community Center to expand their Meals on Wheels to senior citizens from 1000 meals a day to 3000 meals a day -- all with the use of local foods. The business plan paid for by Todd County is funded at \$5,000.00.</p> <p>Exploration of CDFI Funds. A new conversation with the Initiative Foundation has sprung interest in applying for CDFI funds as a way to increase food-processing facilities within the region. \$7,500 from the Initiative Foundation was paid to the University of Minnesota for a CURA CAP intern, to be supervised by R5DC, to research the gaps or opportunities for current processing facilities and distribution systems within the region.</p> <p>AmeriCorps Vista to help support Coop distribution system. R5DC funding \$2,000 a VISTA and the Regional Partnership is funding \$3,000 for the VISTA to work on the Neighborhood Farmer Marketplace Coop distribution system.</p> <p>Region 5 partners asked to help others in the state learn about local foods. Arlene Jones (Farm at St. Mathias) and Cheryal Lee Hills met with community members in Owatonna to describe the work in Region 5 regarding local foods.</p>	<p>purchasing plan. The next step will be to hire a local food purchasing coordinator to work with the hospital's food system directors and local farmers to begin institutionalizing the systems required to implement a local food purchasing program.</p> <p>Brainerd Distribution System Local agencies including Region 5 Development Commission, Happy Dancing Turtle, and the regional partnership continue to build a sustainable local foods distribution system. Conversations and planning for the 2012-2013 school year in addition to summer school farm to school is continuing with plans to fully integrate farm to school in summer programming, along with continuing to build integral systems for farm to institution with local premiere and resort restaurants throughout the growing season.</p> <p>USDA Agriculture and Food Research Initiative (AFRI) grant proposal was submitted by the University of Minnesota Regional Sustainable Development Partnerships. The \$5 million proposal, entitled "Overcoming and Preventing Rural Food Deserts" would include work in the HUD project region in addition to rural areas throughout Minnesota, North Dakota, and South Dakota. The proposal requested resources for Farm to School, distribution and aggregation, and food hub research and implementation funds.</p> <p>R5DC Application submitted to InCommons for regional Food Truck that will deliver to food deserts within the region. \$100,000.00 application.</p> <p>\$320,000.00 application to USDA to expand the Neighborhood Farm Marketplace distribution system.</p>

Creating a Resilient Region: The Central Minnesota Sustainable Development Plan -- Project Update

Activity Description	Update as of 7.30.11	Update as of 12.31.2011	Update as of 06.30.2012
Yellow highlight = Grant Application Pending, Grey highlight = application denied, Green highlighted = Application funded.			
<p>Activity 24: Grow region's energy companies. R5DC – Economic Dev. Dept.</p>	<ul style="list-style-type: none"> A proposal to the Governor's office to capitalize a Sustainable Development Fund (SDF) was submitted at the end of April. Request was for \$250,000 to capitalize a revolving loan fund to finance energy efficiency projects and installation of renewable energy systems for commercial and residential buildings. The SDF would be a hybrid loan fund utilizing best practices of Property Assessed Clean Energy (PACE) and subordinate lending procedures. Access to loan interest loans will spur various types of improvements. An i6 grant application was submitted to the Economic Development Administration in the amount of \$1million, with \$500,000 matching funds. The partners included in this work were: R5DC, Minnesota High Tech Association, DEED Division of Energy Resources, and University of Minnesota Initiative for Renewable Energy, Clean Energy Resource Teams, and Minnesota Solar Energy Industries Association. The Project will foster Solar Industry cluster growth in central Minnesota by addressing supply chain efficiencies, research, and commercialization of technology, workforce development, and product demonstration sites. 	<p>Grants Denied: The proposals to neither the Governor's office nor the i6 submittals were funded.</p> <p>Success for Installation of Solar Thermal. The USDA did fund \$35,000.00 to install solar thermal system on the Brainerd Regional Airport. We will hold workshops one year later to promote ROI, and signage will associate the installation of the technology.</p> <p>Utilities Serving Five County Area Identify Next Steps to Sustainability. On November 30, 2011, 12 utility companies, Habitat for Humanity, CMHP, IF, CERT, and R5DC met to identify ways to address sustainability as it relates to energy. Those present identified 22 action steps to be taken to address energy efficiency issues which were formed as questions:</p> <ol style="list-style-type: none"> 1. How do we provide more energy efficiency low-interest loans? 2. How do we work with CEE to do neighborhood energy challenges? 3. What are the additional opportunities to spend low-income dollars? 4. How do we consistently share information on commercial building projects? 5. How do we standardize rebates across utilities? 6. How do we create partnerships between electric and gas utilities? 7. Commercial, Industrial, and Agriculture: How do we help finance efficient business equipment? 	<p>Application to EDA to create a model Renewable Energy Proof of Concept Center. \$150,000.00 application</p>
<p>Activity 25: Expand entrepreneurship to expand and retain local businesses. R5DC – Economic</p>	<ul style="list-style-type: none"> An application to the USDA's Rural Microenterprise Assistance Program (RMAP) is ready for submission. The request is for a loan in the amount of \$400,000 to capitalize a microloan revolving loan fund to service a 10 county area. The RMAP program has an 	<p>Microenterprise Loan Grant Received. USDA RMAP did fund \$400,000 Loan to establish a microenterprise for 10 counties in central MN and a \$100,000 Grant for technical assistance (However the funds have been tied up by the DC Political Processes). The following foundations provided start up funding and establishment of a Loan Loss Reserve for the</p>	<p>The NCEDA RMAP (Rural Microenterprise Assistant Program) Loan Committee approved another Microloan in April and another in May. Since the inception in March, micro-lending has approved three out of four applicants. Those approvals have provided twelve jobs.</p>

Creating a Resilient Region: The Central Minnesota Sustainable Development Plan -- Project Update

Activity Description	Update as of 7.30.11	Update as of 12.31.2011	Update as of 06.30.2012
Yellow highlight = Grant Application Pending, Grey highlight = application denied, Green highlighted = Application funded.			
<p>Dev. Dept.</p>	<p>accompanying grant of up to 25% of the loan amount. Grant funds will be used to provide direct one-on-one technical assistance to borrowers. The partners in this application are R4DC, North Central Economic Development Association, East Central Regional Development Commission and USDA. Access to micro-credit will enable entrepreneurs and emerging small businesses to utilize an alternative financing mechanism if they are unable to obtain credit elsewhere. Accompanying technical assistance that will be provided as part of the program will prove to be a valuable resource for borrowers.</p> <ul style="list-style-type: none"> The R5DC executive director has been invited to assist in the development of Rural Entrepreneurship Development II: Measuring Impact on the Triple Bottom Line project. This is one of the tools being considered for measuring project impact for the region-wide plan. R5DC executive director has been invited to be a "RED Group" member (Rural Economic Development). June 30th helped plan the October DEED Jobs Conference and brought "sustainability" and cross-discipline to this planning effort with the governor's office. 	<p>microenterprise: Initiative Foundation: \$15,000.00 Otto Bremer: \$22,000.00 Blandin: \$22,000.00</p> <p>Triple Bottom Line, and others, Seeks Regional Expertise. Cheryl Hills attended TBL national conversation Oct 1-5, 2011 in Portland, Oregon. In addition, Cheryl Hills has been attending RED meetings regularly.</p> <p>Intern Secured to Coordinate Regional Endeavor. \$1,000 was awarded to U of MN, Morris Center for Small Towns by R5DC to hire an intern coordinate a regional endeavor between Historical societies, artists, libraries, and local growers.</p>	<p>There continues to be applicant borrowers needing funding, however the criteria necessary to provide loans to these borrowers has prevented the majority from obtaining loan approval. Economic times still remain difficult for commercial borrowers and due to conditions of financial strength, recent borrower applications have not shown the necessary ability to repay the amount of the requested loans.</p> <p>Partnerships. NCEDA has with both gap funders and primary lenders is excellent. There does seem to be a willingness to work closer with borrowers to create new programs that flex to the plus side of the borrower. I've experienced positive signals from lenders we work with on a weekly basis to not only grow or expand existing businesses, but a sincere effort to welcome new entrepreneurs...in short, NEW JOBS.</p> <p>The CORE FOUR Business Planning Course® is a turn-key curriculum for entrepreneurs in their start-up stages. This program is in the process of development for all Region Five NCEDA loan recipients. The technical assistance will soon be available for businesses receiving funds as a requirement in the loan process. The purpose of NCEDA training and technical assistance is designed to foster entrepreneurial thinking and effective business planning and decision-making.</p> <p>CORE FOUR classes and workshops offer a practical, non-academic approach in a relaxed, supportive environment. NCEDA instructors have real-life business experience--we've been in your shoes and have experienced both the gratifications and frustrations of being a business owner. This technical assistance program will offer entrepreneurs a toolbox of how to build a successful business--from an initial idea or concept,</p>

Creating a Resilient Region: The Central Minnesota Sustainable Development Plan -- Project Update

Activity Description	Update as of 7.30.11	Update as of 12.31.2011	Update as of 06.30.2012
Yellow highlight = Grant Application Pending, Grey highlight = application denied, Green highlighted = Application funded.			
			through a disciplined planning and implementation process, to a thriving business enterprise.
<p>Activity 26: Work with county economic development practitioners, Central Lakes College, SBDC, U of MN Extension, and local chambers to address business retention/expansion needs. R5DC – Economic Dev. Dept.</p>	<ul style="list-style-type: none"> R5DC successfully engaged a number of consortium partners (Independent School District 482, Central Lakes College, City of Little Falls, Little Falls Chamber of Commerce, Morrison County Historical Society, Golden Shovel Agency, and Initiative Foundation) in obtaining a U of MN Extension <i>Digital Towns Program</i> grant. The project includes 10-12hrs of training to a community group regarding 3D modeling of selected landmarks. Training is conducted to instruct the group how to conduct 3D models and to upload them onto Google Sketch Up. An application for an infrastructure expansion project in Walker was submitted to the Economic Development Administration requesting \$327,000. Total project cost is \$667,000. City and State funding in the amount of \$340,000 has been committed to the project. The partners engaged in this project are the City of Walker, Cass County Economic Development Corporation, DEED, EDA, and R5DC. Once funded, the project will enable municipal sanitary sewer to be hooked up to the industrial park, which will enable expansions for 3 of the 4 companies located in the park. The project will also alleviate environmental concerns regarding the system that is currently in place. A project involving the rehabilitation and expansion of a rail spur in the City of 	<p>Digital Towns Grant Activities are Underway. Consortium partners (Independent School District 482, Central Lakes College, City of Little Falls, Little Falls Chamber of Commerce, Morrison County Historical Society, Golden Shovel Agency, and Initiative Foundation) have begun training sessions regarding the 3D modeling of selected landmarks.</p> <p>Walker Application. The application for an infrastructure expansion project in Walker submitted to the Economic Development Administration for \$327,000 was denied.</p> <p>The Wadena FRA application was funded at \$1.4 million. A project involving the rehabilitation and expansion of a rail spur in the City of Wadena is moving forward with the announcement of receipt of \$1.4 million from the Federal Rail Administration. The partners engaged included Wadena Development Authority, DEED, Federal Rail Administration, R5DC, and EDA. The project will accommodate a business directly affected by the tornado in June, 2010 and will attract an expansion project to the city due to rail access that will result in 18 new jobs. Project will also bolster the agricultural industry cluster in the city, as all potential rail users are agriculturally based.</p> <p>Unintended Outcome – HUD Connection Leading to EPA Application. Cheryl Lee Hills was approached by EPA at one of the many HUD meetings to explore using EPA grants to conduct Brownfield assessment within the five-county region. This has resulted in a \$400,000 application to EPA for Brownfield assessment. (Also relevant to Activity 13).</p> <p>Unintended Outcome – Lack of Rural Data Identified as Nation-wide and State-wide Need. Proposals are being</p>	<p>R5DC applied to USDA for \$260,000 a RCDI project to fund the nine-vital projects that emerged from the CEDs planning process. The dollars will be used to help expand implementation of these local projects:</p> <ul style="list-style-type: none"> BLAEDC Retired Executives Program. BLAEDC Entrepreneur Program Five-Wings Art Council – Expanding the Impact of Arts, Culture and Heritage in the five-county area Hunt Utilities Group -- .High Performance Homes Connection of the Paul Bunyan Trail to Soo Line Trail Brainerd Lakes Area Chamber of Commerce Bridges Program to connect students to area businesses. Additional microlending Technical Assistance to businesses in the Latino, agriculture and arts communities. Expansion of the regions' passenger rail station. Local Foods Cooperative <p>R5DC will apply for \$500,000 from EDA for alignment of the State of Minnesota rural economic development strategies.</p>

Creating a Resilient Region: The Central Minnesota Sustainable Development Plan -- Project Update

Activity Description	Update as of 7.30.11	Update as of 12.31.2011	Update as of 06.30.2012
Yellow highlight = Grant Application Pending, Grey highlight = application denied, Green highlighted = Application funded.			
	<p>Wadena is moving forward. An application to the Federal Rail Administration was submitted last fall requesting \$1.5million. City officials are exploring scaled back alternatives to the project that would accommodate users and allow the project to move forward without federal funding, thus completing project on a shorter timeline. The partners engaged included Wadena Development Authority, DEED, Federal Rail Administration, R5DC, and EDA. The project will accommodate a business directly affected by the tornado in June, 2010 and will attract an expansion project to the city due to rail access that will result in 18 new jobs. Project will also bolster the agricultural industry cluster in the city, as all potential rail users are agriculturally based.</p>	<p>submitted to NWF and USDA to attempt to meet this need. \$320,000 application to HUD/USDA and others to create a data collection framework, conduct place based planning and provide project implementation grants.</p> <p>HUD Work Leading to Regional Economic Development. The Initiative Foundation, Brainerd Lakes Economic Development Corporation, Brainerd Lakes Chamber of Commerce, Central Lakes Community College, Independent School District 181, DEED, and the University of Minnesota have commissioned a Capstone Project. In summary, The Porter and Harvard Business School's Cluster Mapping of "location quotient" shows central Minnesota's Information/Technology sector to be stronger than other regions of the state (with a quotient of 1.2, where 1.0 is average). With over 35 firms located in the Brainerd Lakes area, this sector is an increasingly key area for expansion of high pay/high demand jobs. However, many of these same firms have identified a lack of skilled workers as limiting their ability to expand or meet current product or service demand. The Capstone project would:</p> <ol style="list-style-type: none"> 1. Survey all information/technology firms in the study area to identify their current and anticipated workforce needs, and categorize education and workforce skill requirements; 2. Identify existing educational and training pathways within the region to address these needs. 3. Review existing and "best" practices used in secondary education to prepare younger students for these career pathways. 4. Explore how the private sector and educational systems can better communicate and coordinate to shorten the pathway from training to employment while maintaining quality; 5. Highlight communication and forecasting tools to improve communication between the private and educational sectors to better anticipate future workforce needs. 	

Creating a Resilient Region: The Central Minnesota Sustainable Development Plan -- Project Update

Activity Description	Update as of 7.30.11	Update as of 12.31.2011	Update as of 06.30.2012
<p>Yellow highlight = Grant Application Pending, Grey highlight = application denied, Green highlighted = Application funded.</p>			
		<p>6. Recommend additional training/education/certification/skill development opportunities which would help address the workforce shortage.</p>	